

**The National Statistical Committee  
of the Kyrgyz Republic**

**FOOD SECURITY AND POVERTY  
INFORMATION BULLETIN  
KYRGYZ REPUBLIC**

**4 / 2009**

**Bishkek 2010**

**The National Statistical Committee  
of the Kyrgyz Republic**

---

**FOOD SECURITY AND  
INFORMATION BULLETIN  
KYRGYZ REPUBLIC**

**4 / 2009**

**Bishkek 2010**

## ***Food security information bulletin***

Editorial board:

- Chairman - O. Abdykalykov  
Members: - D. Baijumanov  
- N. Tulegabylov  
- A. Osmonaliev  
- A. Kim  
- K. Koichumanova  
- R. Plesovskih  
- C. Turdubaeva

For information regarding this publication please contact:

374, Frunze street, Bishkek city;  
phone: 996 (312) 324655, 325557;  
fax: 66-01-38; web-site: [www.stat.kg](http://www.stat.kg);  
e-mail: [nsc\\_mail@stat.kg](mailto:nsc_mail@stat.kg);  
The National Statistical Committee of the Kyrgyz Republic;  
Sampling survey department.

***Food security information bulletin of the Kyrgyz Republic*** contains the analyses of the current situation in food security in 2009. The bulletin combines and systematizes generally accessible materials on food security of the Kyrgyz Republic – namely, availability of food, production perspectives, access to food, as well as indicators of consumption per capita.

Additional materials contains information on population social security in 2009 of State Agency of the Social Security under the Government of the Kyrgyz Republic, as well livestock and poultry record results as for the end of 2009.

Appendices of the bulletin contain review of hydro-meteorological conditions of the Kyrgyz Republic in the 4<sup>th</sup> quarter of 2009, average retail prices for food, estimates on food balance for 2009 by basic foodstuff and indicators for the 1 half of 2008-2009 on dietary energy supplies of different socio-economic groups provided by integrate survey of 5016 households as well Food Security Program.

The publication is quarterly.

Copies: 120 in Russian and 35 in English;

The publication is also available in electronic format.

Users of statistical data are not allowed to sell or distribute data to anyone without agreeing with the NatStatCom (article 17 of the Law on State statistics). Reprinting, translation and extracting are allowed unless the source is stated.

### **Signs and symbols:**

- Event is not existing;
- ... Data are not available;
- 0,0 Negligible and insignificant value.

Details will not add to the total shown because of rounding.

## Contents

Overview	4
Introduction	5
I. Socio-Economic Indicators	6
1.1. Gross Domestic Product	6
1.2. Prices and Tariff Indices	7
1.3. Labour Market	8
II. Availability of Food	10
2.1. Agriculture	10
2.1.1. Crop Production	11
2.1.2. Livestock Production	12
2.2. Producer Prices	12
2.3. Trade in Basic Foodstuff	14
2.4. Availability of Food Per Capita	14
III. Access to Food	15
3.1. Retail Prices	15
3.2. Cash Incomes of the Population	16
IV. Special Articles	19
4.1. On measures of State Support to Vulnerable Groups of the Population in 2009	19
4.2. On results of the count of cattle and poultry in the Kyrgyz Republic	22
List of Abbreviations	27
Glossary	28
Annex:	
1. Review of Hydro-meteorological Conditions of the Kyrgyz Republic in the 4 <sup>th</sup> Quarter of 2009	29
2. Average Retail Prices (by region, 4 <sup>th</sup> Quarter of 2008-2009)	30
3. Food Balance	33
4. Dietary Energy Supplies Taken From Surveys on Daily Energy Supply and Assessment of Daily Needs by Socio-Demographic Group and Region (1 half of 2008-2009)	35
5. Dietary Energy Supplies Taken From Surveys on Daily Energy Supply and Assessment of Daily Needs by Quintile and Region (1 half of 2008-2009)	43
6. Food Balance of Households in Value Terms as Provided by Living Conditions Surveys by Income Quintile and Region (1 half of 2008-2009)	48
7. Food Balance of Households in Value Terms as Provided by Living Conditions Surveys by Expenditure Quintile and Region (1 half of 2008-2009)	54
8. Food Security Indicators of the Kyrgyz Republic	60

## OVERVIEW

*In 2009, according to preliminary estimates, real growth rate of Gross Domestic Product (GDP) made up KGS 196423.1 million and increased by 2.3% as compared to the previous year.*

*Page 6*

*In December 2009, the CPI, which characterizes inflation rate, made up 100.9% as compared to the previous month and in comparison with December 2008 prices for goods and services have remained stable.*

*Page 7*

*In January - December 2009, gross output of agriculture, hunting and forestry made up KGS 110100.2 million and index of physical volume has increased by 7.4% as compared to the corresponding period of the previous year.*

*Page 10*

*In 2009, cereals (in weight after processing) was collected by 27.7% more than in the previous year.*

*Page 11*

*In January - December 2009, producer prices for agricultural production has decreased by 4.5% as compared to the corresponding period of the previous year.*

*Page 12*

## Introduction

Pursuant the Rome Declaration, adopted on November 17, 1996 during the World Food Summit, the Kyrgyz Republic as a member of the international community assumed responsibility to "...conduct a policy aimed at the alleviation of poverty and inequality, ... providing physical and economic access for all people and at all times to sufficient, safe and nutritious food to meet their dietary needs and food preferences for an active and healthy life".

To this end, the Government of the Kyrgyz Republic, in cooperation with the European Commission in Kyrgyz Republic has formulated a National Food Security Policy. The government in 1999 agreed this policy that forms part of the national policy of the Kyrgyzstan. The policy (and EC funding under the EC-Food Security Programme) sustains reforms in food security related sectors, such as agriculture, health, education and social protection.

**Food safety** is a physical availability of a foodstuff, access possibility to the indicated foodstuff (the products made in households, and acquired through the market, gifts and other sources as well) and consumption of a foodstuff in that quantity which are necessary for maintenance of requirements for a food.

Food security presumes that food must be physically **available** in the required quantities, adequate **access** to those food supplies both through the market and other sources (i.e. sufficient purchasing power), and the **utilization** of food supplies in the quantity sufficient to meet the specific dietary needs of individuals.

**Availability:** physical existence of quantitatively and qualitatively adequate and safe food items.

**Access:** all households and household members have sufficient resources to obtain appropriate food (through production, purchase or donation);

**Stability:** continuous ensurance of availability of, access to and appropriate use and utilization of food. If not, individuals will suffer from chronic or transitory food insecurity

The aim of the KR Food Security Information Bulletin is to provide up-to date, reliable information and analysis of the food security situation in the republic.

This issue has been prepared by the National Statistical Committee of the Kyrgyz Republic. The publication contains materials provided by Meteorological Office of the Ministry of Ecology and Emergency of the Kyrgyz Republic, Water Management Department of the Ministry of Agriculture, Water Resources and Processing Industry of the Kyrgyz Republic. The bulletin was financed by the European Commission in the Kyrgyz Republic and technical support was provided by UN FAO.

## I. Socio-Economic Indicators

*The socio-economic indicators depict the overall conditions of the country, whose population's food and nutrition security is being analyzed.*

### 1.1. Gross Domestic Product

According to preliminary estimates, in 2009, Gross Domestic Product (GDP), calculated by *production method*, was valued at KGS 196423.1 million and in comparison with 2008 GDP has increased by 2.3%. Real GDP growth rate without "Kumtor" mining company made up 2.9%. GDP per capita was valued at KGS 38.3 thousand (USD 888) and increased by 1.3%.

**Table 1: Main Socio-Economical Indicators**

	2008	2009
Actual population (million, average annual)	5,08	5,13
GDP nominal in KGS million	187991,9	196423,1
O/w:		
Agriculture (%)	23,5	22,1
Industry and construction (%)	20,4	20,6
Services (%)	43,0	46,2
GDP per capita (KGS thousand)	35,6	38,3
GDP growth (%)	108,4	102,3
CPI <sup>1</sup>	124,5	106,8
Food and alcohol-free beverage price indices <sup>1</sup>	132,3	101,1
Service price indices <sup>1</sup>	125,2	118,1
Number of unemployed, thousand people <sup>2</sup>	2184,3	-
Average monthly salary (KGS)	5378	6253 <sup>3</sup>
Import, million USD <sup>4</sup>	4072,4	3040,3
Export, million USD <sup>4</sup>	1855,6	1440,5
Exchange rate <sup>5</sup> :		
KGS/USD exchange rate	36,57	42,89
KGS/EUR exchange rate	53,70	59,93
KGS/RUR exchange rate	1,48	1,36
KGS/KZT exchange rate	0,30	0,29
Minimal consumer budget, KGS	3570,95 <sup>6</sup>	3263,22

<sup>1</sup> In percent to the corresponding period of the previous year

<sup>2</sup> Preliminary data

<sup>3</sup> Excluding small businesses

<sup>4</sup> Including volumes of foreign trade of the natural persons

<sup>5</sup> According to data of National Bank of the Kyrgyz Republic

<sup>6</sup> Minimal consumer budget

## 1.2. Price and Tariff Indices

In December 2009, as compared to the previous year, the CPI, which characterizes inflation rate, made up 100.9% and as compared to December 2008 prices for goods and services were stable.

In December 2009 price for foodstuff and alcohol-free beverages increased by 1.4% as compared to the previous month which were basically related with increase of prices for fruits and vegetables by 7.9%, dairy products, cheese and eggs - by 2.4%, also for sugar (by 4.9%) and oil (by 2.9%). from which for milk – by 5.1% and eggs – by 2.7%.

At the same time, prices for bakery products and cereals have decreased by 1.2%, rice - by 3.4%

**Table 2: Price Index for Basic Foodstuff by Months of 2009**

(as a % to the previous month)

	Wheat flour		Bread Lepeshka	Beef	Mutton	Milk	Eggs	Sunflower oil	
	premium quality	first quality							
January	96,5	94,7	96,6	99,6	102,9	105,8	102,1	104,9	93,1
February	94,4	93,5	100,0	97,2	101,0	102,0	100,4	96,1	90,7
March	97,4	97,5	99,5	98,4	100,2	100,1	93,4	93,5	96,0
I quarter <sup>1</sup>	88,7	86,3	96,0	95,2	104,2	108,1	95,7	94,3	81,1
April	94,3	95,6	97,0	99,4	98,4	98,5	97,2	93,5	95,1
May	94,5	95,3	99,0	99,5	100,3	101,0	96,7	101,5	92,2
June	101,4	99,8	100,0	99,9	100,6	100,4	97,6	98,1	97,5
II quarter <sup>1</sup>	90,4	91,0	96,0	98,9	99,3	99,9	91,8	93,1	85,5
July	99,4	96,9	100,0	99,0	99,0	97,4	95,3	100,3	101,8
August	98,5	97,4	100,0	99,7	98,7	97,2	98,5	101,1	101,0
September	97,8	97,8	99,2	100,0	100,2	97,6	102,3	101,4	99,6
III quarter <sup>1</sup>	95,7	92,3	99,2	98,7	97,9	92,3	96,0	102,7	102,4
October	99,3	99,5	96,6	100,0	100,1	101,5	102,8	101,1	101,0
November	99,6	99,4	97,3	100,1	99,8	99,1	101,2	104,1	100,4
December	99,6	98,7	99,6	99,6	100,2	99,2	105,0	102,9	103,2
IV quarter <sup>1</sup>	98,5	97,7	93,6	99,8	100,0	99,7	109,1	108,3	104,6

<sup>1</sup> Progressive total for three quarters.

In December 2009, prices for fresh vegetables increased by 10.8%, for fresh fruits increased by 8.6%.

**Table 3: Price Index for Selected Types of Fruits and Vegetables by Months of 2009**

(as a % to the previous month)

	Carrot	Onion	Cabbage	Cucumber	Tomato	Grape	Apples	Potatoes
January	104,0	95,9	101,8	166,0	115,3	115,5	106,3	112,1
February	94,1	95,5	100,0	93,2	108,9	101,5	100,3	100,2
March	86,9	103,2	99,8	96,4	120,9	100,0	99,7	97,7
I quarter <sup>1</sup>	85,1	94,5	101,6	149,0	151,9	117,2	106,3	109,7
April	91,4	132,2	97,5	87,7	101,1	100,0	114,6	113,5
May	111,3	98,5	102,7	54,0	77,2	100,0	108,4	111,3
June	116,0	73,6	97,4	75,4	66,0	72,7	102,0	84,1
II quarter <sup>1</sup>	118,1	95,8	97,6	35,7	51,5	72,7	126,8	106,2
July	109,8	76,5	67,2	67,9	51,4	55,2	78,0	64,6
August	94,2	85,6	101,8	70,4	61,9	78,5	83,8	80,0
September	93,7	93,5	121,2	156,9	86,3	89,1	82,3	102,3
III quarter <sup>1</sup>	96,9	61,3	83,0	75,0	27,5	38,6	53,8	52,8
October	86,9	94,6	104,0	128,4	139,4	103,4	91,7	98,1
November	98,5	90,7	99,0	144,4	249,0	113,0	125,4	97,8
December	104,8	96,8	104,5	164,8	149,0	138,6	114,1	105,0
IV quarter <sup>1</sup>	89,7	83,1	107,6	305,4	517,2	162,0	131,3	100,7

<sup>1</sup> Progressive total for three quarters.



A major factor affecting inflation processes in the previous year was decrease of prices for fruits and vegetables, and essential goods such as bread, flour (about by third), oils and fats, dairy products.

**Table 4: Price Index for Selected Types of Food in December**  
(as a % of December of the previous year)

	2008	2009
Bakery products and cereals	118,2	84,6
Meat	111,9	102,7
Fish	118,8	101,4
Dairy products, cheese and eggs	117,9	96,1
including eggs	117,7	97,6
Oils and fats	107,1	86,0
Fruits	144,3	90,3
Vegetables	132,0	76,1
Potatoes	86,9	62,0

In December 2009, average prices for rice, flour, mutton, gasoline have decreased as compared to the previous month, at the same time prices for sugar, milk, cotton and sunflower oils and fuel have increased.

**Table 5: Average Prices for Selected Representative Goods**  
(KGS/kg)

	Wheat flour		Bread	Lepeshka	Mutton	Beef	Potatoes
	premium quality	first quality					
January	31,83	25,26	31,59	39,06	189,90	177,56	18,60
February	30,06	23,63	31,57	37,96	193,81	179,46	18,99
March	29,28	23,07	31,40	37,29	194,03	179,77	18,90
April	27,59	22,10	30,47	37,08	190,93	176,83	20,30
May	26,08	21,05	30,16	36,90	192,88	177,27	30,09
June	26,48	21,01	30,16	36,87	193,94	178,48	24,81
July	26,26	20,31	30,16	36,45	189,02	176,86	17,91
August	25,85	19,77	30,16	36,34	183,65	174,43	12,95
September	25,27	19,31	29,91	36,34	179,55	174,87	13,29
October	25,16	19,22	28,90	36,39	181,60	174,50	13,20
November	25,05	19,11	28,13	36,44	179,88	174,11	12,48
December	24,95	18,87	28,00	36,31	178,47	174,38	13,23

More detailed information on prices for food is available in the section 3 “Access to Food”.

In January-December 2009, import of foodstuff made up 12.7% of total import.

**Table 6: Import and Export of Foodstuff<sup>1</sup>**  
(mln. USD)

	2008	2009 <sup>2</sup>
Import	400,8	384,7
Export	391,2	340,9

<sup>1</sup> Including volumes of foreign trade of the natural persons

<sup>2</sup> Preliminary data

### 1.3. Labour market

According to data of the Ministry of the Kyrgyz Republic on Labour, Employment and Migration, the number of unemployed population, who have registered as looking for job as at January 1, 2010

decreased by 4.7% as compared to the similar date of the previous year, the number of unemployed decreased by 8.6%. Registered unemployment rate made up 2.6% of economic active population.

**Table 7: Unemployed Population Registered in Bodies of State Employment Service  
as of January 1, 2010**

	Total thsd. people	of which unemployed		
		thsd. people	as a % of the corresponding date of the previous year	as a % of the corresponding date of the previous month
<b>The Kyrgyz Republic</b>	<b>97,4</b>	<b>61,4</b>	<b>91,4</b>	<b>98,6</b>
Batken Oblast	9,1	5,9	106,6	97,7
Djalal-Abad oblast	23,1	14,7	78,5	96,9
Issyk-Kul oblast	5,5	4,6	94,4	100,1
Naryn oblast	11,2	6,7	96,4	98,8
Osh oblast	14,8	13,1	95,8	100,0
Talas oblast	3,4	2,1	99,4	96,8
Chui oblast	9,2	6,6	92,6	97,4
Bishkek city	9,7	6,3	103,3	99,4
Osh city	9,6	1,4	72,2	123,2

## 2. Availability of Food

**Availability of food:** physical existence of quantitatively and qualitatively adequate and safe food items

### 2.1. Agriculture

Gross output of agriculture, hunting and forestry in January-December 2010 made up KGS 110100.2 million and index of agricultural production has increased by 7.4% as compared to the corresponding period of the previous year

**Tables 8: Agricultural Production in 2009**

	As a % of	
	the corresponding period of the previous year	the corresponding period of the previous month
January	101,0	72,3
February	101,6	106,0
March	101,6	107,1
January-March	101,4	-
April	101,9	109,7
May	102,1	135,6
June	103,0	149,4
January-June	102,1	-
July	106,5	277,9
August	122,9	105,9
September	95,6	130,4
January-September	105,0	-
October	124,6	64,2
November	114,4	40,6
December	102,9	30,6
January-December	107,4	-

Of total production, crop production accounts for 54.3%, livestock production– 44.1%, services – 1.5%, hunting and forestry – 0.1%.

**Table 9: Gross output of agriculture, hunting and forestry by territory in January-December 2010**

	Million soms (at current price)	As a % of	
		the previous year	
<b>The Kyrgyz Republic</b>	<b>110100,2</b>	<b>107,4</b>	<b>100</b>
Batken Oblast	7208,2	103,7	6,5
Djalal-Abad oblast	20192,2	109,0	18,3
Issyk-Kul oblast	15312,7	113,1	13,9
Naryn oblast	7819,7	104,0	7,1
Osh oblast	20682,2	102,7	18,8
Talas oblast	8443,3	103,6	7,7
Chui oblast	29333,3	110,4	26,6
Bishkek city	500,1	95,0	0,5
Osh city	608,5	99,5	0,6

### 2.1.1. Crop production

In 2009, the total sown area under agricultural crops made up 1169.6 thousand hectares, which is higher by 9.3 thousand hectares or 0.8% than in the previous year. Cereals occupied 654.5 thousand hectares (56.0% of total sown area), technical crops, accordingly, 93.0 thousand (7.9%), potatoes, vegetable and melons – 137.2 thousand (11.7%) and fodders – 284.9 thousand (24.4%).

Unused arable land size has decreased in comparison with the previous year by 10.8 thousand hectares and made up 97.4 thousand hectares. Main reasons for not using arable lands were: 53.200 hectares because of dryness; 18.900 – remoteness and stony ground, 11.200 – lack of water and irrigation network shutdown; 5.700 hectares – salinization and bogging; 2.0 hectares – lack of funds.

**Table 10: Gross Harvest of Basic Agricultural Crops in 2009**

	Gross harvest, thsd.tons	As a % of 2008
Cereals – total (net weight)	1929,2	127,7
Wheat	1056,7	141,6
Raw cotton (at recorded weight)	49,2	51,7
Tobacco(at recorded weight)	12,0	88,2
Sugar beet (factory)	54,0	-
Oil crops	73,3	110,2
Potatoes	1393,1	104,4
Vegetables	832,5	101,2
Melons	137,2	110,3
Fruits and berries	200,5	108,2

In 2009, the volume of cereals (at net weight) was higher by 27.7% as compared to the previous years.

**Table 11: Grain production by territory in 2009**  
(at net weight)

	Gross harvest, thsd. tons	As a % to 2008
<b>The Kyrgyz Republic</b>	<b>1929,2</b>	<b>127,7</b>
Batken Oblast	106,4	116,0
Djalal-Abad oblast	300,6	127,9
Issyk-Kul oblast	253,7	168,0
Naryn oblast	69,1	117,2
Osh oblast	297,3	110,7
Talas oblast	150,7	107,6
Chui oblast	746,7	133,0
Bishkek city	0,0009	100,0
Osh city	4,6	118,1

In 2009, in average by country yield capacity cereals and legumes including corn made up 29.3 centners per 1 hectare (at net weight) against 23.2 centners per 1 hectare in the previous year.

In 2009, as a result of hail and heavy fall of rain cereals and legumes (including corn) under 1.300 hectares perished and were written off, potatoes – 152, tobacco-57, vegetables – 13, fodders-149.

Winter crops were sown more that in the previous year by 4.800 hectares.

**Table 12: Planting of Winter Crops by Regions**

	Total planted under yield of 2010, thsd. hectares	as % to the previous year
<b>The Kyrgyz Republic</b>	<b>277,0</b>	<b>101,8</b>
Batken Oblast	15,2	95,8
Djalal-Abad oblast	38,1	90,1
Issyk-Kul oblast	20,4	104,9
Osh oblast	61,2	98,7
Talas oblast	13,7	94,3
Chui oblast	128,3	108,9
Osh city	0,09	56,8

In autumn of the previous year, 96.200 hectares were fall – ploughed which is less by 16.900 hectares (by 15%) as compared in 2008.

### 2.1.2. Livestock Production

Since the beginning 2009, tendency of increase of production volumes of basic livestock products was observed.

**Table 13: Production of Basic Livestock Products by Region in January-December 2009**

	Cattle and poultry for slaughter (at live weight)	Raw milk	Eggs, thousand	Wool (in physical weight)
	<i>Tons</i>			
<b>The Kyrgyz Republic</b>	<b>336909</b>	<b>1314730</b>	<b>369334</b>	<b>11006</b>
Batken Oblast	26913	92829	21214	629
Djalal-Abad oblast	48549	253772	40946	1702
Issyk-Kul oblast	40931	175057	73704	2029
Naryn oblast	48322	116166	6592	1904
Osh oblast	70665	255428	41052	2142
Talas oblast	22654	82608	19763	1291
Chui oblast	77110	331485	163320	1277
Bishkek city	419	1089	1577	6
Osh city	1346	6296	1166	26
	<i>As a % to the previous year</i>			
<b>The Kyrgyz Republic</b>	<b>101,5</b>	<b>103,2</b>	<b>100,0</b>	<b>101,5</b>
Batken Oblast	101,3	100,7	101,8	102,6
Djalal-Abad oblast	103,8	108,2	108,2	101,2
Issyk-Kul oblast	103,0	103,9	101,1	99,9
Naryn oblast	100,6	100,4	97,3	101,1
Osh oblast	101,6	101,5	102,1	100,2
Talas oblast	101,0	102,5	101,1	102,8
Chui oblast	100,4	102,9	97,6	106,2
Bishkek city	65,1	72,7	57,8	46,2
Osh city	100,1	94,3	103,9	108,3

### 2.2. Producer Prices

In January-December 2009, producer prices for *agricultural products* decreased by 4.5% as compared to the corresponding period of the previous year, for crop production by 10.8% and livestock production have increased by 2.6%.

**Table 14: Producer Prices for Agricultural Products**  
(in %)

	Total		Of which prices for products of			
	to the previous month	to December of the previous year	to the previous month	to December of the previous year		
January	99,5	99,5	98,6	98,6	100,4	100,4
February	100,2	99,7	100,7	99,3	99,8	100,1
March	99,2	99,0	99,0	98,3	99,5	99,7
April	100,4	99,4	102,3	100,6	98,5	98,2
May	99,0	98,4	102,0	102,6	95,9	94,1
June	100,4	98,9	102,9	105,6	97,7	91,9
July	100,2	99,0	95,4	100,8	105,8	97,2
August	83,9	83,0	77,2	77,8	90,9	88,4
September	98,3	81,2	97,3	73,8	99,3	88,8
October	97,4	77,4	93,5	66,8	100,6	88,3
November	99,7	77,2	101,5	67,7	98,4	86,9
December	104,9	81,0	106,1	71,9	104,0	90,3

Prices for grain have decreased in comparison with January-December 2008 (by 28.9%), fruit cultures (by 13.7%), at the same time prices for potatoes have increased (by 11%) and eggs (by 8.5%).

**Table 15: Producer Price Indices of Selected Types of Agricultural Products**  
**in January-December 2009**  
(in %)

	Grain – total	Wheat	Vegetables	Potatoes	Meat (at live weights)	Raw milk	Eggs
	<i>To the previous month</i>						
January	94,7	95,5	102,6	106,9	98,1	104,0	95,8
February	103,3	104,7	104,2	97,0	101,0	97,8	103,6
March	95,7	96,4	99,0	101,1	99,8	99,1	99,6
April	103,7	102,0	104,7	100,7	99,0	97,4	100,2
May	92,9	91,0	99,7	125,3	108,4	77,9	94,3
June	100,9	100,8	94,7	119,7	101,3	91,2	92,9
July	89,9	78,9	97,0	97,9	99,0	119,5	126,7
August	88,3	81,4	81,1	55,7	102,3	70,6	81,5
September	106,1	101,3	82,9	97,1	95,9	107,8	101,5
October	90,3	95,1	99,5	86,1	98,9	103,9	103,7
November	95,2	99,6	99,8	111,6	93,7	109,7	91,1
December	100,5	107,9	106,6	107,4	107,0	98,5	99,6
	<i>To the previous year</i>						
January	110,4	102,2	103,4	135,8	111,8	117,1	106,6
February	99,1	90,8	106,6	127,0	112,0	111,0	113,4
March	89,2	80,3	102,5	118,8	110,1	114,3	116,7
April	82,5	71,9	107,5	130,4	106,4	116,9	123,3
May	72,6	62,5	108,9	139,7	109,0	94,1	117,0
June	68,6	62,0	104,1	167,6	109,8	89,2	105,5
July	59,3	47,2	109,8	136,1	108,2	106,5	128,2
August	56,3	43,2	104,5	76,1	110,9	76,9	104,4
September	62,7	44,9	85,8	88,9	107,4	77,8	105,9
October	55,2	43,0	82,7	70,3	105,4	79,1	110,2
November	58,9	49,8	73,4	82,4	96,9	80,5	89,0
December	60,8	58,6	70,5	79,2	103,9	71,3	87,3
January - December	71,1	61,6	97,0	111,1	107,6	94,5	108,5

### 2.3. Trade of basic foodstuff

As food balance shows (appendix 3), Kyrgyzstan, in general, is provided with foodstuff. Data on export and import of selected foodstuff are given below:

**Table 16: Import, Export of Basic Foodstuff**  
(*thsd. tons*)

	2008	2009 <sup>1</sup>
<b>Import</b>		
Bakery products expressed in grain	557,0	543,6
Sugar and confectioneries	72,4	87,7
Vegetable oil	25,1	34,0
Share of foodstuff in total import, %	9,8	12,7
<b>Export</b>		
Milk and dairy products expressed in milk	83,5	128,3
Sugar and confectioneries	3,1	0,3
Share of foodstuff in total export, %	21,1	20,6

<sup>1</sup> Preliminary data.

The share of foodstuff export in total export for 2009 made up 20.6%. Basic export items are potatoes, vegetables, fruits and dairy products.

### 2.4. Availability of food per capita

The results of the food balances indicate that monthly average availability of foodstuffs remains stable (see table No. 17 and appendix No.3).

**Table 17: Consumption level of Basic Foodstuffs**  
(*per capita, kg/month*)

	2008 <sup>1</sup>	2009 <sup>2</sup>
Bread products (expressed in grain)	15,9	15,9
of which processed wheat products (expressed in grain)	13,7	13,6
Potatoes	8,3	8,3
Vegetables and melons	12,6	12,6
Fruits and berries	2,5	2,4
Sugar and confectionery items	1,8	1,8
Meat and meat products	3,1	3,2
Milk and dairy products	18,1	18,1
Eggs	6,3	6,3
Vegetable oil	0,6	0,7

<sup>1</sup> Data are specified

<sup>2</sup> Preliminary data

More detailed information is available in the Annex Table 3 – “Food Balances”<sup>2</sup>.

<sup>1</sup> Preliminary data

<sup>2</sup> Food balance drawn up based on the document “Methods of compiling the food balance for basic foodstuff” approved by the Ministry of Finance, Ministry of Agriculture, Water Resources and Processing Industry and the National Statistical Committee of the Kyrgyz Republic.

### III. Access to Food

*Access: foodstuffs must be accessible both in relation of physical availability and purchasing power.*

#### 3.1. Retail Prices

In January, April, May and November prices for food products (excluding alcohol beverages and tobacco) increased in average by 0.4% during the last year. In December prices increased by 1.4% due to seasonal increase of prices for vegetable and berry products, dairy products.

In general, during last year prices for food products have decreased by 7.4%, and in 2008, prices increased by 20.9%. Decrease of prices for bakery and cereals by 15.4%, big share of which are household expenditures, significantly affected to that dynamic of prices. Prices for flour decreased by 27.8%, macaronies – by 17%, bread – by 12.1%. Prices for products of enterprises on production of flour –cereal industry and bread have fallen by 18.6% and 3.7%, respectively. Prices for pastries have increased by 16.9%. price for rice also increased by 8.6% and maximal rate of growth (in average 110.2%) was observed in April-May.

Prices for meat have increased by 2.7%, including sausage products – by 7.4%. Significant increase of price was for pork (by 15.7%) and half smoked sausage (by 10.4%).

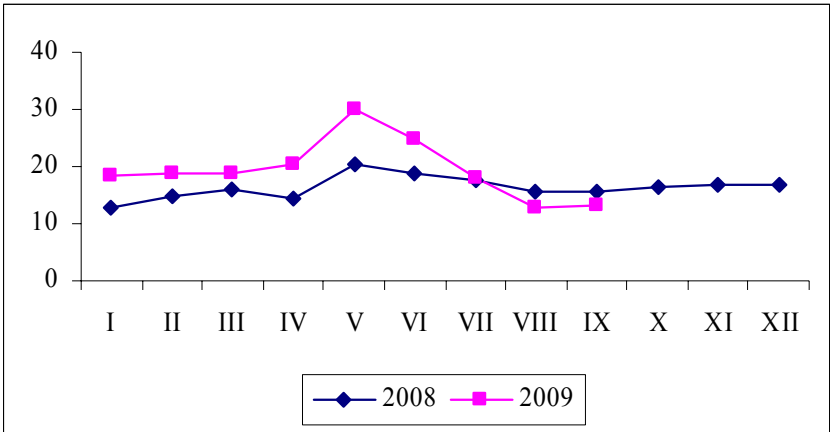
In December 2009, prices for dairy products, cheese and eggs were lower by 3.9% than in December of 2008. However, in January – August only prices for these type of products decreased by 1.7% per month, and from September to the end of the year increased by 1.5% monthly.

During 2009 prices for oils and fats decreased (by 14%). And slightly increase of prices were observed only in August and December. Vegetable oils became cheaper by 26.7%, animal fats – by 17.6%, butter – by 7.4%, and butterine became expensive by 14.1%.

Prices for fruits and vegetables were established depending on their seasonal character. In first and fourth quarters of 2009, prices for fruits and vegetables has risen by 3% and 11.6% respectively, and in second and third quarters prices have fallen by 4.7% and 24,5%. For the year, as whole, prices for fruits have decreased by 23.9%, fruits – 9.7%.

**Potatoes.** In the IV quarter of 2009 prices for potato were stable: from KGS 13.2 to KGS 13.23 per kilo. In comparison with the corresponding period of the previous year prices decreased by 22% and made up KGS 12.97 per kilo.

**Graph 1: Average Monthly Retail Prices for Potatoes**  
(KGS/kg)

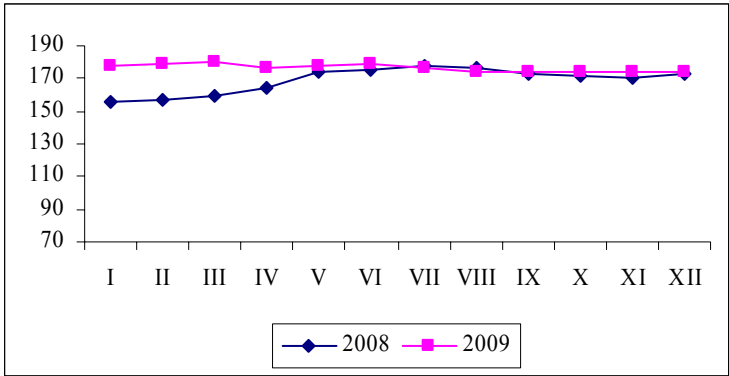




**Mutton.** In the IV quarter of 2009, retail prices for mutton decreased by 1.5% as compared to the corresponding period of 2008: from KGS 182.80 in the fourth quarter of 2008 to KGS 179.98 per kilo in the fourth quarter of 2009.

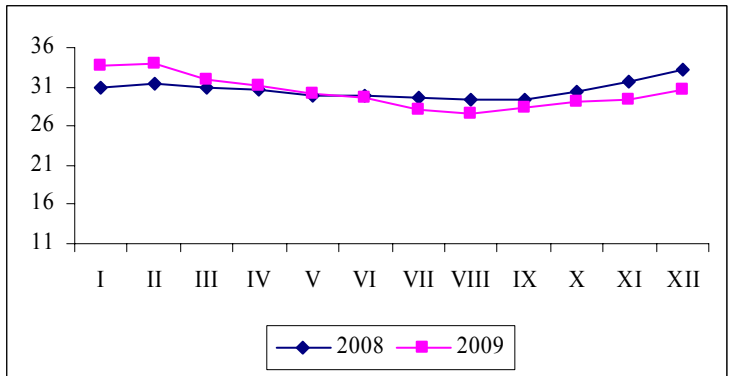
**Beef.** In the IV quarter of 2009, retail prices for beef increased by 1.5% as compared to the IV quarter of 2008: from KGS 171.81 in the fourth quarter of 2008 to KGS 174.33 per kilo in the fourth quarter of 2009.

**Graph 2 Average Monthly Retail Prices for Beef**  
(KGS/kg)



**Fresh milk.** In the IV quarter of 2009 prices for fresh milk increased: from KGS 28.99 in October to KGS 30.55 per kilo in December and increase in prices was valued at 5.4%. Prices decreased by 6.7% in comparison with the similar period of the previous year and made up KGS 29.61 per kilo.

**Graph 3: Average Monthly Retail Prices for Milk**  
(KGS/l)



**3.2. Cash incomes of the population**

**Cash incomes of the population** have a tendency to increase during a several years. According to the results of the sample survey of the households, in the first half of 2009 disposable monthly cash incomes of the population accounted for KGS 2234.0 per capita and increased by 27,6% as compared to the corresponding period of the previous year. Rate of disposable cash incomes were KGS 2119.4 per capita. A major source of cash incomes of the population was incomes from labor activity, share of which account for 71% of total. The second major source of cash incomes of the population was incomes from agricultural product sale, which account for 13.8%.

The structure of cash incomes of households significantly differs depending on place of residence. In urban areas income from employment made up 81.4% and in rural areas – 61.2%. The second significant source of income in rural areas was income from sale of products produced in personal subsidiary farms of the population (23,3%).

Average real cash incomes of the population accounted for KGS 1985.8 per capita and increased by 13.4% as compared with the corresponding period of the previous year.

Disposable cash incomes of the population were higher than the average national incomes in Bishkek city (by KGS 529.5), Chui oblast (by KGS 263.4) and Osh oblast (KGS 67). Average cash incomes of the population per capita were considerably lower than the average national income in Talas (by KGS 629.9), Naryn (by KGS 511.1), Issyk-Kul (by KGS 332.9), Djalal-Abad (by KGS 273.2) and Batken oblast (by KGS 77.7).

During the last years, decrease of inequality among the population with different level of welfare was observed in the Kyrgyz Republic. The level of social inequality is measured by the corresponding indicators and one of them - income differences rate (rate of funds) characterised income ratio of 20-% groups of the population with the highest and lowest incomes.

In first half of 2009, more than 38% of incomes were disposed to 20% of highest income groups which is lower by 1.5% as compared to the corresponding date of the previous year. Coefficient of funds has decreased from 5.8 to 4.2 times due to redistribution of incomes to population with low and middle level of incomes.

**Table 18: Cash Incomes of the Population by Quintile in I half of 2009**  
(in %)

	2008	2009
<b>Cash incomes – total:</b>	<b>100</b>	<b>100</b>
O/w by 20% group		
first (with lowest incomes)	6,2	8,2
second	13,1	12,8
third	18,5	17,2
fourth	22,5	23,2
fifth (with highest incomes)	39,2	38,6
Income ratio of the 20% lowest and 20% highest income groups of the population, by times	5,8	4,2

The average nominal monthly wage of one employee in 2009 (excluding small enterprises) in comparison with 2008 has increased by 15.3% and made up KGS 6253. Real increase of wages (deflated by the CPI) was valued at 8.0%. Together with this, real wage in Batken oblast has decreased by 2.3%.

According to official exchange rate of the National Bank of the Kyrgyz Republic, the average wage in 2009 was valued at USD 145.8

The highest increase of average nominal monthly wage in 2009 was observed in Djalal-Abad, Talas oblasts, and lowest – in Batken oblast.

At the same time, growth delay of wage was observed as whole by republic as well in all regions. So, if in 2008 average monthly wage as whole by republic increased by 36% as compared to the previous year, so in 2009 – by 15.3%. Higher growth delay of wage was observed in Batken and Naryn oblasts.

**Table 19: Average Monthly Nominal and Real Wage by Region in 2009<sup>1</sup>**

	KGS	Average monthly nominal wage		Average Monthly Real wage as a % of the previous year
		2008		
<b>The Kyrgyz Republic</b>	<b>6253</b>	<b>136,0</b>	<b>115,3</b>	<b>108,0</b>
Batken Oblast	4127	137,3	108,5	97,7
Djalal-Abad oblast	5392	135,4	120,2	110,9
Issyk-Kul oblast	4264	136,4	114,0	109,8
Naryn oblast	5383	144,8	109,5	105,6
Osh oblast	3265	135,4	110,7	101,7
Talas oblast	4299	143,0	118,2	111,8
Chui oblast	5199	126,6	109,3	103,0
Bishkek city	9111	136,8	116,3	109,1
Osh city	5632	130,1	116,7	107,3

<sup>1</sup> Excluding small enterprises

Considerable increase of wage in 2009 was observed in all types of economic activity – trade, repair of vehicles, household articles and articles of personal use, agriculture and construction. At the same time, all types of economic activity have had damped growth as compared to 2008.

In 2009, the average wage of employees employed in financial activity, transportation and communication, production and distribution of electricity, gas and water was considerably higher than the average national wage. The lowest wage was observed in agriculture, healthcare and education, providing communal, social and personal services.

As of January 1, 2010 as compared to the similar date of 2009, total arrears in salary payments for the republic decreased by 14.7% and in budgetary sector by 55%. At the same time, in comparison with the corresponding date of the previous year total arrears in salary payments in Osh city has increased by 11.8%, Chui oblast – by 9.2% and Batken oblast – by 1.7%.

**Table 20: Arrears in Salary Payment by Region as January 1, 2010.**

	KGS million		As a % to the corresponding date of the previous month	
	Total	Including from budgets of all level	Total	Including from budgets of all level
<b>The Kyrgyz Republic</b>	<b>279,5</b>	<b>20,9</b>	<b>90,1</b>	<b>59,4</b>
Batken Oblast	35,3	3,5	101,7	87,5
Djalal-Abad oblast	52,8	2,8	73,2	51,9
Issyk-Kul oblast	35,0	3,3	83,7	84,6
Naryn oblast	17,2	2,3	79,6	46,9
Osh oblast	0,6	0,1	85,7	-
Talas oblast	4,3	0,6	29,1	19,4
Chui oblast	59,5	6,4	109,2	71,1
Bishkek city	24,5	0,8	97,6	38,1
Osh city	50,2	1,1	111,8	40,7

## IV. Special articles

### I. On measures of State Support to Vulnerable Groups of the Population in 2009

(According data of State Agency Social Security under the Government of the Kyrgyz Republic)

#### *State allowances*

In order to strengthening the address ness in provision of state allowances the additional criteria of definition of needs degree are developed during the fixing of unified monthly benefit (UMB) which has been approbated since February, 2009 in pilot regions of Republic (Kemin, Issykata, Lyailyak, Naryn, Suzak, Chonalai regions and in Osh city). Approbation of additional criteria was conducted on sample selected 1300 families.

After the approbation of additional criterias, with account of its results the new edition of Law KR «On State allowances in the Kyrgyz Republic» is developed. The law is accepted by Jogorku Kenesh on December 4, 2009 and signed by President of Kyrgyz Republic on December 29, 2009 by № 318.

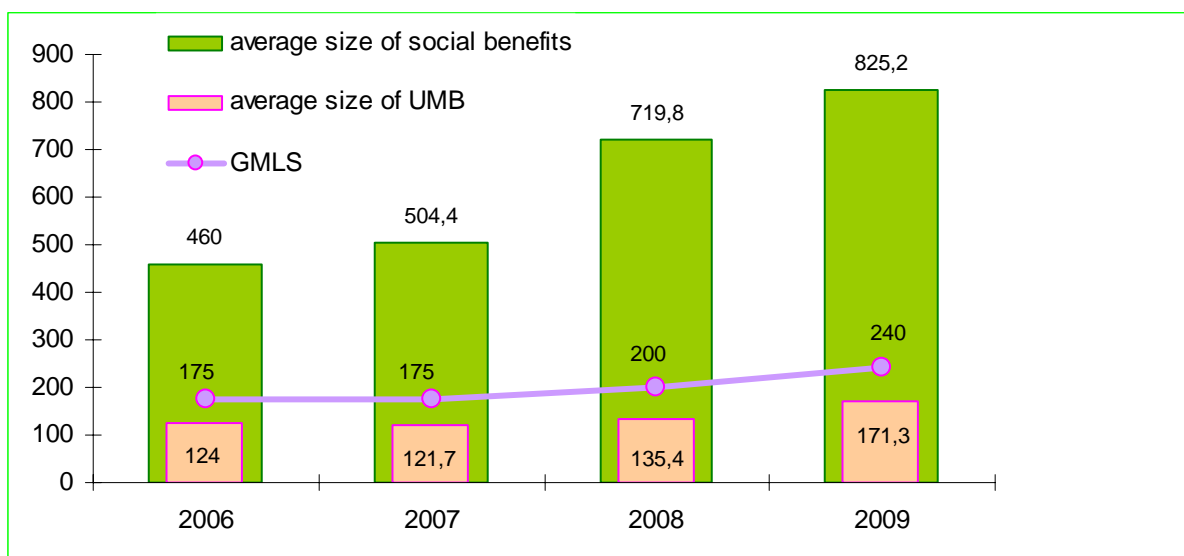
Adoption of this Law will allow to strengthen the address ness of issued allowances on vulnerable families and to pay a benefit on children to really needy families.

In order to strengthening of support of needy families governmental regulation of Kyrgyz Republic was accepted on October 1, 2009 by № 614 «About increasing of the guaranteed minimum level of consumption» according to which since October 1, 2009 the size of the guaranteed minimum level of consumption (GMLC) is increased to KGS 240, and this allowed to increase the average size of the allowance.

As January 1, 2010, average size of social benefits (SB) made up KGS 823.2 which is more by KGS 105 as compared to the previous year (in 2008 – KGS 719.8).

Average size of unified monthly benefit (UMB) made up KGS 171.3 and was higher by 27% as compared to the previous year (in 2008 – KGS 135.4). Increase of GMLS from October 1, 2009: from KGS 200 to KGS 240 affects increase of average size of UMB.

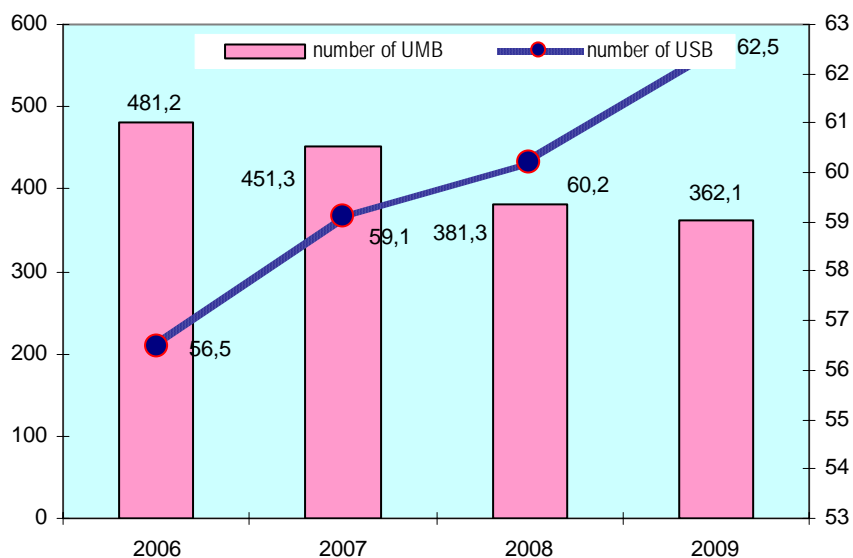
**Graph 4: Dynamic of changing of average size of GMLS, UMB and social benefits (KGS)**



In 2009, the number state allowance receivers have decreased by 3% in average as compared to the previous year and made up 424.600 people, of which 362.100 people – UMB receivers and 62.500 people – social benefit receivers.

If number of UMB receivers has decreased by 5% (from 380,000 to 362.100 people) then in social benefit there is tendency to increase. In 2009, the average number of social benefit receivers has increased by 4% (from 60.200 to 62.500 people) in comparison with the previous year.

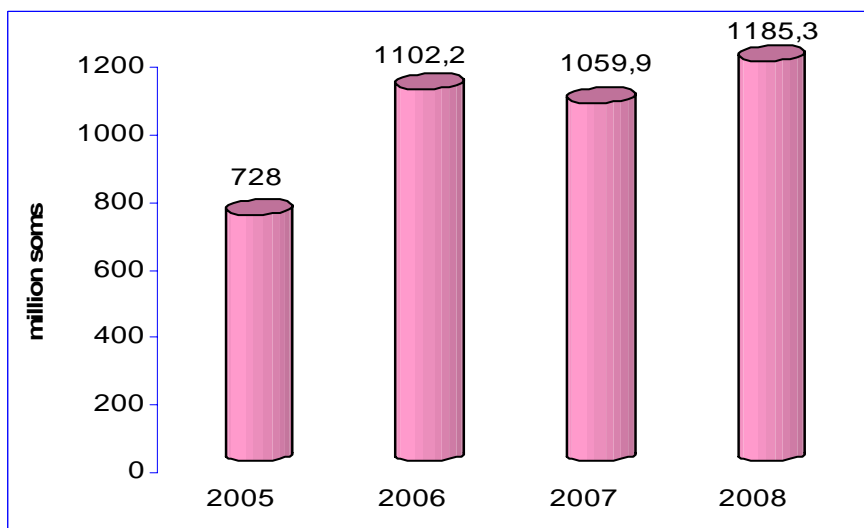
**Graph 5: Dynamic of UMB receivers**



**Financing of state allowances**

In 2008, KGS 1188.2 million were directed for payment of state allowances and in 2009 it made up KGS 1362.8 million. Despite decrease of number of state allowances receivers in comparison with the previous year, the increase of size of state allowances and payment of timely monthly compensations with a view of provisional measures of support of socially vulnerable levels of population has served to increase the funds to payments of state allowances in 2008.

**Graph 6: Dynamic of state allowances financing**



Since January 2010 monthly social privileges have increased by 50% and formed in fixed rate (with account of increase tariffs for energy carriers), and also rate of single monthly benefits has increased

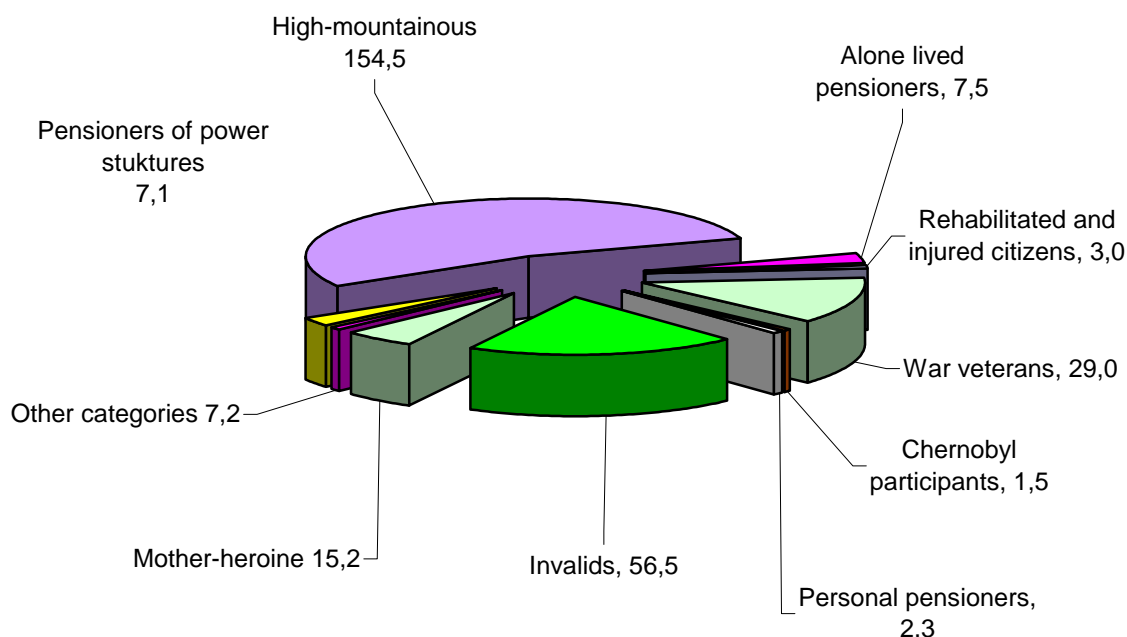
by 25% (in average by republic) according to the Decree of the President of the Kyrgyz Republic “On state allowance’s size formation” from November 13, 2009 № 508.

### Social privileges

Today the system of privileges is branched out and based on categorical principle of granting. 38 categories of the population or 283.800 families use privileges.

The total number of privileges is 38 types.

**Graph 7. Main categories of beneficiaries (thsd.people)**



In 2009, number of beneficiaries as for January 1, 2010 made up 281.400 families and has decreased by 3.000 as compared to the previous year (284.600 families).

Mainly, it came about due to replacement of some categories of citizens, such as veterans of the Great Patriotic War, Chernobyl participants, rehabilitate citizens.

In connection with increase of value for natural gas and solid fuel from January 1, 2010 and according to the Decree of Board of Ministry of Labour and Social Development from February, 2009 №1 new rates of cash compensation for payment of housing services and energy carriers were approved.

In order to additional support to the celebrating of 64 - anniversaries of the Victory in the Great Patriotic War and according to the Decree of the President of the Kyrgyz Republic from April 27, 2009 DP № 211, additional payments for veterans of the Great Patriotic War (from KGS 1000 to KGS 3000) were done for the total amount KGS 25 million.

In 2009, 3122 person were provided by preferential permits on sanatorium treatment (for the total amount KGS 42.2 million) which is more by 113 permits in comparison with the corresponding period of the previous year (in 2008, 3009 permits for the total amount KGS 27.4 million).

907 invalid wheelchairs are given out to persons with limited possibilities of health. In 2008, 662 invalid wheelchairs have been given out.

221 persons are free of charge provided by hearing aids (in 2008 – 273 person).

In order to social support of the population of the Kyrgyz Republic in the framework of optimization of current system of social privileges in the conditions of increase of tariffs for energy carriers since January 1, 2010 according to Decree of the President of the Kyrgyz Republic “On cash compensation to separate categories of citizens in connection with change of tariff policy on energy carriers” from November 13, 2009 DP № 511, replacement of legislative established privileges for cash compensation is being made. Compensations are established in firm size depending on category of exempt. Thus in the view of addressing streamlining of categories of exempts with an exception of them 15 categories is carried out. They are: families living in high mountains, personal pensioners, unemployed persons, survivor’s pension, servicemen-pensioners, pensioner-invalids, to whom privileges were granted irrespective of needs degree and social support which will be carried out by increasing of size of pensions, state allowances and wages.

It is necessary to note that one of the replacement reason of presented privileges for cash payments is change of the clearing mechanism with enterprises and organizations granted privileges for payment of cash compensations to exempts that increase a transparency of payment and prevent corruption.

Before, payment functions of state benefits and cash compensations were assigned to the regional social service centers which have been liquidated within the framework of state administration reforms. As the result there is a decentralization of these functions at regional level and level of urban administrations of social security. Since January 1, 2010, new system has started.

### **Social support of the population**

In 2009, due to the increase of prices for food and in order to support of vulnerable population, payment of monthly compensational payments (KGS 35) to the state allowances, certified in accordance with Law of the Kyrgyz Republic “On State Allowances in the Kyrgyz Republic”, were done.

Compensations were paid to each beneficiaries of the state allowances (UMB and USB) with main rate of benefit.

By results of 2009, payments were done to the total amount KGS 177.900 million, including KGS 26.400 million – from funds of republic budget and KGS 151.500 million – from grant of the World Bank.

Pursuant Order of the Government of the Kyrgyz Republic № 55-p from February 12, 2009 and also in order to support vulnerable population, from February 20 to March 20, 2009 Mercy Month was conducted in all regions of the republic.

Meeting with population on explanation of mechanism of social assistance in republic as well addressed charitable activities were conducted by head of local administrations and staff of social security services.

Practical conferences, round tables, concerts, celebratory lunches, submit of gifts, cash money and food, “open doors”, “timurovskoe dvijenie” from students and volunteers, marathons, and collecting funds to hostel home and child home.

For the period of conducting of Mercy Month, 473.500 people have received assistance for the total amount KGS 18.1 million.

### **Support of aged citizens**

To the day of older persons, material and humanitarian assistance, medical and household services, charitable lunches, preparation for winter period, facilitation for houses and backyards and others were organized for elderly citizens during the Mercy Month and for the total amount KGS 17438.850.

### **Support of Disabled people**

To the International Disabled Day – December 3, KGS 8921.000 were allocated by the corresponded Ministries, Departments and Local Government Administrations as a humanitarian assistance to the disabled people, including KGS 1765,000 allocated by other Ministries and Departments.

## II. On results of the count of cattle and poultry in the Kyrgyz Republic as of the end of 2009

According to the article 12 of Law “On State Statistics”, in pursuant the Order of the Government of the Kyrgyz Republic of October 1, 2009 № 613 “On Program of the Statistical work of the Kyrgyz Republic” to measure the actual number of cattle and poultry the NatStatCom has organized and conducted the one time count of cattle and poultry as of the end of 2009.

The count of cattle and poultry was conducted in state and collective farms, subsidiary farms of enterprises and organization, peasant farms of individual entrepreneurs, subsidiary farms of the population. The following results were produced:

**Table 21: Cattle and poultry**

*(all categories of farms, as of the end of year, heads)*

	2008	2009	2009 to 2008	
			+, -	in %
Large cattle - total	1224563	1278070	53507	104,4
Sheep and goats	4502651	4815539	312888	107,0
Pigs	63328	61315	-2013	96,8
Horses	362433	372951	10518	102,9
Poultry - total	4364777	4535762	170985	103,9
Camels	332	337	5	101,5
Mules	64795	68570	3775	105,8
Rabbits	28076	31514	3438	112,3
Bee families, units	82989	84891	1902	102,3

The analyses of the count of cattle and poultry shows that the number of basic type of animals have tends to grow (except pigs and poultry).

As at the end of 2009, the number of large cattle increased by 6.2% in farms of Djalal-Abad oblast, by 5.6% - Issyk-Kul, by 5% - Osh, by 3.2% - Talas and Naryn, by 2.8% - Batken, by 2.6% - Chui oblasts and by 1.6% - Osh city. The number of large cattle in farms of Bishkek city dropped by 1.6%.

Of total large cattle 2.3% are yaks, the number of which increased by 4363 heads (by 17.6%) and make up 29116 heads.

**Table 22: Number of yaks by territory**

*(all categories of farms, as of the end of 2009)*

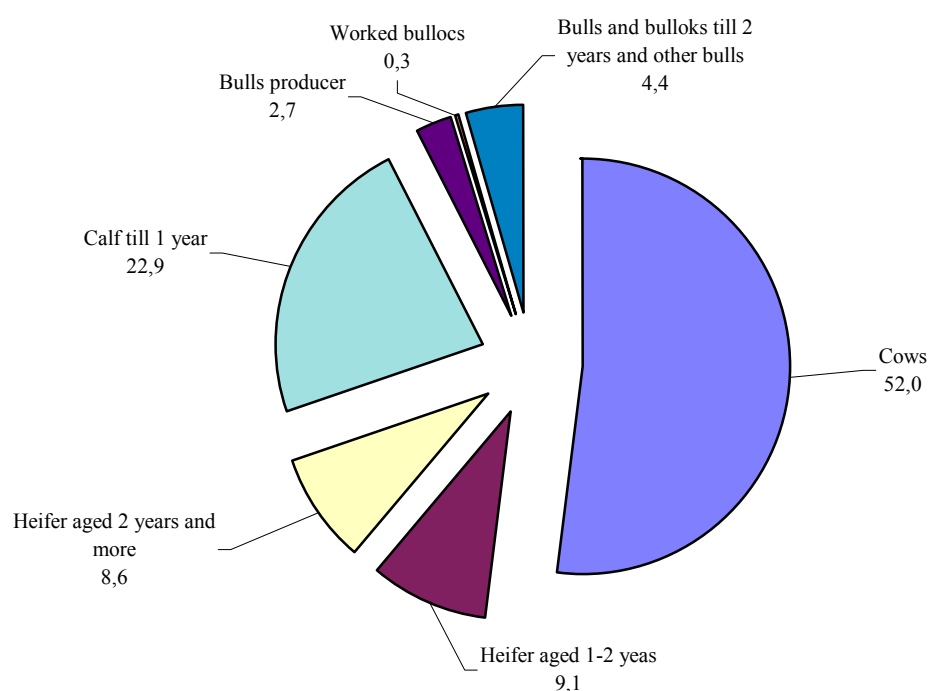
	Heads	In % to	
		to the corresponding date of the previous year	To the total number of yaks
<b>Kyrgyz Republic</b>	<b>29116</b>	<b>117,6</b>	<b>100</b>
Batken oblast	1324	102,9	4,5
Djalal-Abad oblast	205	149,6	0,7
Issyk-Kul oblast	8358	105,2	28,7
Naryn oblast	13134	123,1	45,1
Osh oblast	5058	138,7	17,4
Talas oblast	295	114,3	1,0
Chui oblast	375	92,1	1,3
Special count	367	93,4	1,3

The number of yaks/cows increased by 20.3% and make up 14996 heads.

The big share of large cattle is cow (52%) and lowest – worked bullocks (0.3%).



**Graph 8: Structure of large cattle by sex**



The number of sheep and goats increased by 80.000 heads in farms of Djalal-Abad and Naryn oblasts, by 52.500 in Osh, by 37.100 in Chui, by 22.800 in Talas and by 7.800 in Batken oblast.

Of total sheep and goats, 19.4% (933.700 heads) are goats. The highest number of goats is in farms of Djalal-Abad (24.2% of total goats), Naryn (20.2%) and Osh (17.7%) oblasts.

The number of horses increased by 3.800 heads (by 5.3%) in farms of Issyk-Kul oblast, by 1.800 (by 4.4%) – Chui, by 2.100 (by 2.8%) – Osh oblast.

In comparison with the corresponding date of the previous year the number of female cattle has increased.

**Table 23: Female cattle**

*(all categories of farms, as of the end of year, heads)*

	2008	2009	2009 as a % to 2008	Share in total, %
Cow	635598	664294	104,5	52,0
Female sheep and goats and female lambs over 1 year	3132881	3396513	108,4	70,5
Main female pigs	19031	18484	97,1	30,1
Mares aged 3 years and over	171243	177976	103,9	47,7

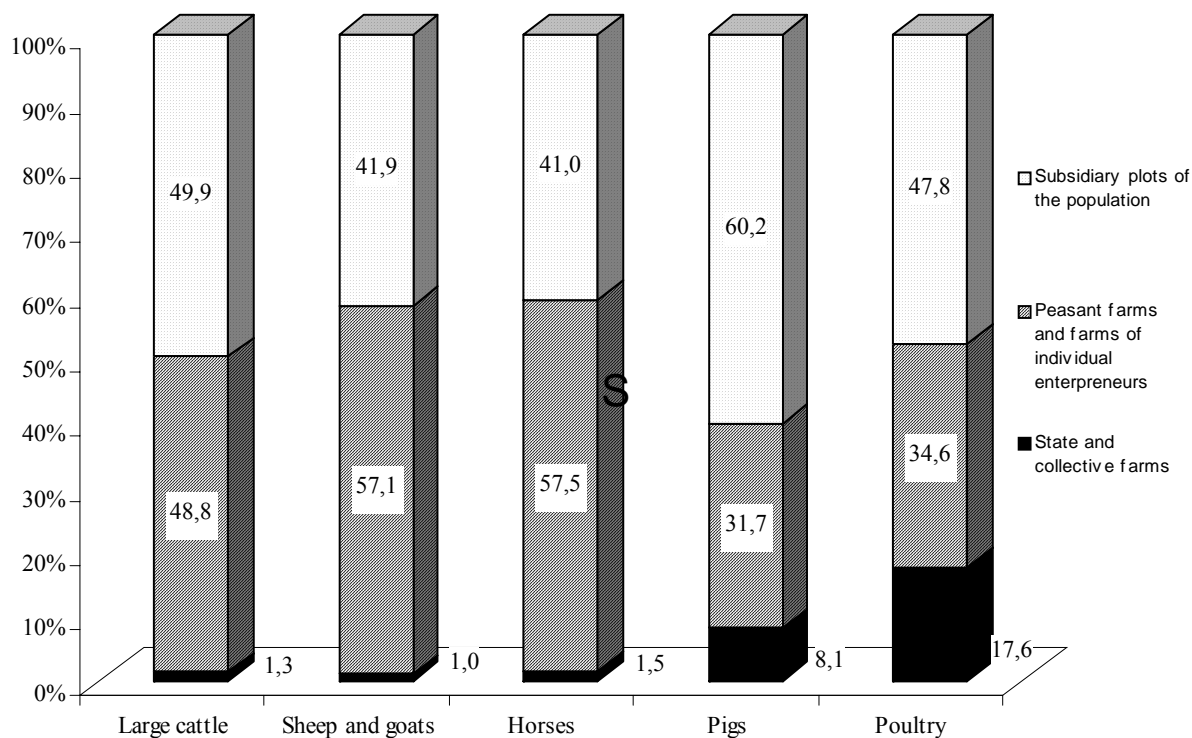
The number of cows in farms of Djalal-Abad increased by 9.500 (by 7.4%), Issyk-Kul – by 4.800 (by 5.6%), Naryn – by 3.200 (by 5.0%), Osh oblast - by 6.100 (by 4.3%), Batken – by 1.900 heads (by 3.4%), Talas – by 0.900 (by 2.4%) and Chui – by 2.300 (by 2.0%).

The share of female sheep and goats in total sheep and goats made up 70.5%. The number of female sheep and goats increased by 263.600 heads (by 8.4%). The number of female sheep and goats increased by 13.1% in farms of Djalal-Abad oblast, by 9.8% - Chui oblast.

The number of mares aged 3 years and over increased by 3.9% and the share of these mares in total number of horses made up 48%. The number of mares increased by 2.400 heads in farms of Issyk-Kul oblast, by 2.000 heads – Osh oblast.

The most part of the share of cattle are in subsidiary farms of the population.

**Graph 9: Main types of Cattle and Poultry by category of Farms**  
(as a % of total)



The number of basic type of cattle (except pigs) in subsidiary farms of the population continues to grow in comparison with the previous year.

**Table 24: Cattle and poultry by categories of farms**  
(as of the end of year, heads)

	State and collective farms		Peasant farms		Subsidiary plots of the population	
	2009	2009 В % К 2008	2009	2009 В % К 2008	2009	2009 В % К 2008
Large cattle	17035	85,1	623033	136,2	638002	85,4
Sheep and goats	49060	100,8	2747530	132,5	2018949	84,8
Pigs	4990	103,3	19430	98,9	36895	94,9
Horses	5557	92,4	214310	121,3	153084	85,2
Poultry	794987	112,5	1571615	135,6	2169160	86,8

As at the end of 2009, 5789 rabbits, 35250 mulls, 205 camels and 18099 bee families are in the peasant farms.

25542 rabbits, 33320 mulls, 205 camels and 39078 bee families are in the subsidiary plots of the population.

Main types of cattle and poultry are:

- large cattle in farms of Osh oblast (22.9% of total number), Djalal-Abad (20.1%) and Chui (18.4) oblasts;

- sheep and goats in farms of Djalal-Abad (19.5%), Osh oblast (18.9%), Naryn (17.8%) and Issyk-Kul (14.3%) oblasts;

- horses in farms of Naryn (24.1%), Osh (21.4%), Issyk-Kul (20.4%) and Djalal-Abad (14.2%) oblasts.

**Table 25: Main Types of Cattle by Region**  
(in all types of farms, as of the end 2009)

	Large cattle		Sheep and goats		Horses	
	Heads	As a % to total	Heads	As a % to total	Heads	As a % to total
<b>Kyrgyz Republic</b>	<b>1278070</b>	<b>100</b>	<b>4815539</b>	<b>100</b>	<b>372951</b>	<b>100</b>
Batken oblast	112775	8,8	441469	9,2	6921	1,8
Djalal-Abad oblast	257024	20,1	938459	19,5	52892	14,2
Issyk-Kul oblast	174536	13,7	686552	14,3	75966	20,3
Naryn oblast	128929	10,1	854910	17,8	89925	24,1
Osh oblast	292930	22,9	912348	18,9	79958	21,4
Talas oblast	65439	5,1	427771	8,9	22410	6,0
Chui oblast	235773	18,4	531488	11,0	43966	11,9
Bishkek city	1013	0,1	5376	0,1	269	0,1
Osh city	8749	0,7	15407	0,3	435	0,1
Special count	902	0,1	1759	0,0	209	0,1

Data on cattle and poultry by republic, oblasts, towns, regions, and also in breakdown by aiyl okrugs are given in the annexes.

## ABBREVIATIONS

<b>GDP</b>	Gross Domestic Product
<b>WHO</b>	World Health Organization
<b>GMCL</b>	Guaranteed Minimum Consumption Level
<b>UMB</b>	Unified Monthly Benefit
<b>EC</b>	European Commission
<b>CPI</b>	Consumer Price Index
<b>MCB</b>	Minimum Consumer Budget
<b>EC FSP</b>	European Commission Food Security Programme
<b>FAO</b>	Food & Agriculture Organization

## Glossary

**The unemployed** – people of 16 and more who during the period under review had no job (income-generating occupation); were in search for a job i.e. applied to public employment institutions or used alternative ways of job finding as well as were ready to start working.

**Gross Domestic Product (GDP)** – a general indicator of economic activity which is calculated in basic and market prices (GDP nominal) and in comparable prices (GDP real).

**Consumer price index on goods and paid services to the population (CPI)** – characterises the change in the general price level for goods and services over time. The index measures the correlation of the value of actually fixed set of goods and services during the given period to the value thereof during the basic period.

**Average nominal monthly salary** is calculated by dividing actually accrued salary fund to the staff and part-time employees by the number used for the calculation of average salary and number of months in a year during the corresponding period.

**Average daily per capita calorie** intake measures the calories in the consumed food products per one household member as well as chemical composition in proteins and fats.

**Official unemployment level** – the ratio of people officially registered as unemployed to the number of economically active population expressed in per cent.

**Availability** of food refers to the physical quantities of food at the disposal of the population as a result of domestic food production, net trade. At the national level availability of food is defined as a combination stocks, commercial import, food aid and own production. Following aspects also refer to availability: climatic conditions, the areas sown and harvested, crop yields, animal numbers and productivity, producer prices for food, food prices in neighboring countries, and the national policies which determine production, trade, distribution and pricing.

The availability of food per capita is calculated using a food supply/utilization balance sheet (food balance). A food balance shows for each basic food commodity, the total physical availability and utilization of that foodstuff over a given period of time, usually 1 year. Total **physical availability** is the sum of opening stocks, production and imports in that commodity in a given period of time. **Total utilization** covers use for human consumption + use as animal feed + seed + losses + exports + closing stocks. In any one period, the availability and utilization of the same commodity must balance. Drawn up over a succession of years, food balances usually reveal a trend in total availability, imports, exports, and the availability of food for human consumption and for feed use. Dividing the annual amount of food available for human consumption by the population gives a key indicator of availability: the average availability of food per capita per year. This measure of food availability is a national average, which takes no account of households' access (i.e. ability to produce, purchase or otherwise obtain) to food.

**Access** to food refers to the ability of households to obtain adequate safe and appropriate foods to meet their needs for a healthy and active life. Access can be through production for own consumption, market purchases or donations/transfers. Access differs between households according to employment status, income, family or household size, location etc and therefore is generally measured at the household level, using surveys. Elements that contribute to access also include social security benefits, payment delays in salaries and benefits, inflation, the cost of essential food and other items compared to income. National policies which affect employment, income and inflation also affect households' access to food.

**Use of food** refers to the selection, composition, preparation and allocation of food within the family. Utilization of food refers to the ability of the human body to take and use food within the body. Food use covers knowledge of appropriate diets, and proper allocation of food. The ability of the body to utilize food is affected by its state of health and access to clean drinking water, access to basic health services etc. The ultimate measure of food security is the nutritional status of the population.

## Annex

### Review of hydro meteorological conditions of the Kyrgyz Republic in the fourth quarter of 2009.

(Source: State Agency on Hydrometeorology of the Ministry of Emergency of the Kyrgyz Republic)

#### Agro meteorological conditions:

**October.** The average monthly temperature in most of districts of the country was above the normal by 1...3 degrees, in piedmont areas of Chui, Batken, Osh and Djalal-Abad oblasts, Kara-Buura, Jungal regions and Toktogul cavin was near the normal, in Kumtor area was below the normal by 1 degree.

The amount of rain in most of districts of the country was below the normal (20-70%), in Toktogul cavin, Issyk-Kul and Naryn districts and Kumtor area was above the normal (120-290%).

**November.** The average monthly temperature in most of districts of the country was near the normal, in Chui valley, in farming land of Batken and Naryn oblasts, mountain areas of Djalal-Abad oblast was above the normal by 1.5...2 degrees, in Chon-Ashuu Pass was below the normal by 1 degree.

The amount of rain in most of districts of Osh oblast, farming land of Issyk-Kul, Naryn oblast was above the normal – 130-267%, in Talas valley, piedmont areas of Djalal-Abad oblast and in mountain areas of Chui oblast was below the normal – 58-80%, and in other regions was near the normal.

**December.** The average monthly temperature in most of districts of the country was near the normal, in Chui and Talas valleys, Djalal-Abad oblast and Issyk-Kul cavin was above the normal by 2...4 degrees, in Chon-Ashuu Pass was below the normal by 1 degree.

The amount of rain in piedmont areas of Batken, Osh oblast and in mountain areas of Issyk-Kul oblast was above the normal – 130-343%, in mountain areas of Chui, Djalal-Abad and Naryn oblasts was below the normal – 58-80%, in other districts it was near the normal.

#### Hydrological conditions in December 2009:

Run-offs of the most rivers of the republic were near normal. Increased discharge (124-175%) was observed in Chu, Talas, in the rivers of Naryn basin, Ala Archa, Kara Kuldja, Donguz Too and Kyzyl Suu. Decreased discharge (70-77%) was observed in Kurshab and Isfairam Sai rivers.

Submerged off-shore ices and shushes were in rivers Naryn, Talas, Ala Archa, Padysha Ata, ice gorges in river Djyrgalan.

Water inflow to Orto-Tokoi reservoir was 175%, Kirov – 96%, Toktogul –142% of the norm.

**Table 1: Condition of Reservoirs as of December 31, 2009**

Reservoirs	Changes during a month mln. m <sup>3</sup>	Volume of water in 2009		Volume of water in 2008	
		mln. m <sup>3</sup>	%	mln. m <sup>3</sup>	%
Toktogul	-668	11704	60	8367	43
Orto Tokoi	+94	340	72	224	48
Kirov	+138	328	60	184	34

Source: Main Department of Meteorology

**Таблица 2:Изменение средних потребительских цен на продукты питания  
в разрезе регионов в IV квартале 2008-2009 гг.**

(сом/кг)

**Table 2: Changes in average retail prices in Kyrgyzstan in IV quarter 2008-2009**

(soms / kg)

Область /Oblast	IV квартал / IV quarter		2009		
	2008	2009	октябрь/ october	ноябрь/ november	декабрь/ december
<b>Картофель / Potatoes</b>					
Баткенская/ Batken	17,60	9,79	9,06	9,50	10,80
Джалал-Абадская / Djalal-Abad	13,83	11,40	11,00	11,00	12,20
Иссык-Кульская / Issyk-Kul	10,56	8,14	8,25	7,38	8,80
Нарынская / Naryn	8,60	8,67	8,67	8,67	8,67
Ошская / Osh	17,22	13,58	14,17	13,92	12,67
Таласская / Talas	10,88	10,64	10,38	10,50	11,05
Чуйская / Chui	12,59	11,83	10,67	11,83	13,00
г.Бишкек/ Bishkek	18,00	13,87	14,35	13,12	14,13
<b>В среднем по республике / Average in the Republic</b>	<b>16,63</b>	<b>12,97</b>	<b>13,20</b>	<b>12,48</b>	<b>13,23</b>
<b>Молоко свежее / Milk</b>					
Баткенская/ Batken	19,45	21,00	20,00	20,00	23,00
Джалал-Абадская / Djalal-Abad	31,67	31,75	31,25	31,25	32,75
Иссык-Кульская / Issyk-Kul	43,94	41,93	41,43	41,71	42,66
Нарынская / Naryn	14,77	11,79	10,40	10,40	14,56
Ошская / Osh	39,77	35,71	33,75	34,38	39,00
Таласская / Talas	19,68	18,99	18,33	18,96	19,67
Чуйская / Chui	24,33	21,75	20,00	21,25	24,00
г.Бишкек/ Bishkek	31,58	29,33	29,17	29,33	29,50
<b>В среднем по республике / Average in the Republic</b>	<b>31,72</b>	<b>29,61</b>	<b>28,99</b>	<b>29,30</b>	<b>30,55</b>
<b>Мука 1 сорта / Flour 1st grade</b>					
Баткенская/ Batken	26,75	18,75	18,25	19,00	19,00
Джалал-Абадская / Djalal-Abad	24,40	17,97	18,00	18,00	17,90
Иссык-Кульская / Issyk-Kul	28,20	17,82	19,22	17,44	16,80
Нарынская / Naryn	24,73	18,39	18,60	18,60	17,96
Ошская / Osh	30,25	19,33	19,33	19,33	19,33
Таласская / Talas	24,08	15,45	16,00	16,00	14,36
Чуйская / Chui	30,87	22,00	21,67	22,00	22,33
г.Бишкек/ Bishkek	27,03	18,93	19,13	19,00	18,67
<b>В среднем по республике / Average in the Republic</b>	<b>27,54</b>	<b>19,06</b>	<b>19,22</b>	<b>19,11</b>	<b>18,87</b>
<b>Рис среднезерный / Rice</b>					
Баткенская/ Batken	55,83	60,00	60,00	60,00	60,00
Джалал-Абадская / Djalal-Abad	53,96	53,06	54,17	52,50	52,50
Иссык-Кульская / Issyk-Kul	55,16	57,61	60,94	57,03	54,88
Нарынская / Naryn	56,67	60,44	62,67	59,33	59,33
Ошская / Osh	72,52	76,17	80,50	74,00	74,00
Таласская / Talas	57,73	63,81	64,29	64,29	62,86
Чуйская / Chui	50,37	58,33	58,33	58,33	58,33
г.Бишкек/ Bishkek	52,67	60,56	61,67	61,67	58,33
<b>В среднем по республике / Average in the Republic</b>	<b>55,21</b>	<b>61,86</b>	<b>63,38</b>	<b>62,19</b>	<b>60,02</b>

Таблица 2: (продолжение)

Table 2: (continued)

Область /Oblast	IV квартал / IV quarter		2009		
	2008	2009	октябрь/ october	ноябрь/ november	декабрь/ december
<b>Сахар-песок / Sugar</b>					
Баткенская/ Batken	30,00	42,63	41,00	42,50	44,40
Джалал-Абадская / Djalal-Abad	34,40	44,92	45,00	44,75	45,00
Иссык-Кульская / Issyk-Kul	33,18	43,49	42,67	42,67	45,13
Нарынская / Naryn	33,00	41,87	41,20	41,20	43,20
Ошская / Osh	35,47	44,78	44,25	44,25	45,85
Таласская / Talas	34,61	44,06	43,81	44,07	44,31
Чуйская / Chui	33,67	44,93	44,25	44,25	46,30
г.Бишкек/ Bishkek	35,45	44,53	43,65	43,75	46,20
<b>В среднем по республике / Average in the Republic</b>	<b>34,88</b>	<b>44,45</b>	<b>43,67</b>	<b>43,78</b>	<b>45,90</b>
<b>Лук / Onions</b>					
Баткенская/ Batken	18,17	8,00	8,50	7,00	8,50
Джалал-Абадская / Djalal-Abad	19,71	7,39	8,67	6,50	7,00
Иссык-Кульская / Issyk-Kul	20,97	7,80	8,25	7,75	7,40
Нарынская / Naryn	21,52	15,83	19,50	15,50	12,5
Ошская / Osh	21,77	10,66	12,17	10,75	9,07
Таласская / Talas	18,62	11,33	12,00	11,00	11,00
Чуйская / Chui	17,33	10,53	10,00	10,00	11,60
г.Бишкек/ Bishkek	23,87	13,69	14,56	13,50	13,00
<b>В среднем по республике / Average in the Republic</b>	<b>22,39</b>	<b>12,16</b>	<b>13,03</b>	<b>11,91</b>	<b>11,54</b>
<b>Хлопковое масло / Cotton oil</b>					
Баткенская/ Batken	80,00	80,00	80,00	80,00	80,00
Джалал-Абадская / Djalal-Abad	88,97	72,22	66,67	73,53	76,47
Иссык-Кульская / Issyk-Kul	110,71	78,61	78,61	78,61	78,61
Нарынская / Naryn	105,56	61,11	61,11	61,11	61,11
Ошская / Osh	103,25	68,94	68,72	68,72	69,39
Таласская / Talas	104,33	66,27	66,27	66,27	66,27
Чуйская / Chui	113,68	63,22	63,22	63,22	63,22
г.Бишкек/ Bishkek	108,15	71,58	70,65	70,65	73,45
<b>В среднем по республике / Average in the Republic</b>	<b>105,85</b>	<b>71,04</b>	<b>70,11</b>	<b>70,52</b>	<b>72,50</b>
<b>Баранина / Mutton</b>					
Баткенская/ Batken	190,00	180,00	180,00	180,00	180,00
Джалал-Абадская / Djalal-Abad	180,00	180,00	180,00	180,00	180,00
Иссык-Кульская / Issyk-Kul	146,88	148,65	151,25	147,19	147,50
Нарынская / Naryn	144,22	149,50	152,00	149,50	147,00
Ошская / Osh	170,42	170,00	170,00	170,00	170,00
Таласская / Talas	165,00	151,07	150,00	150,00	153,20
Чуйская / Chui	158,17	158,67	160,00	160,00	156,00
г.Бишкек/ Bishkek	192,03	188,71	190,92	188,50	186,70
<b>В среднем по республике / Average in the Republic</b>	<b>182,80</b>	<b>179,98</b>	<b>181,60</b>	<b>179,88</b>	<b>178,47</b>



Таблица 2: (продолжение)

Table 2: (continued)

Область /Oblast	IV квартал / IV quarter				
	2009				
	2008	2009	октябрь/ october	ноябрь/ november	декабрь/ december
<b>Говядина / Beef</b>					
Баткенская/ Batken	160,00	160,00	160,00	160,00	160,00
Джалал-Абадская / Djalal-Abad	155,00	155,00	155,00	155,00	155,00
Иссык-Кульская / Issyk-Kul	150,19	152,52	152,81	151,25	153,50
Нарынская / Naryn	157,00	162,43	163,00	159,50	164,80
Ошская / Osh	150,42	150,00	150,00	150,00	150,00
Таласская / Talas	167,00	167,42	170,00	166,25	166,00
Чуйская / Chui	179,83	179,17	182,50	177,50	177,50
г.Бишкек/ Bishkek	179,10	183,80	183,55	183,85	184,00
<b>В среднем по республике / Average in the Republic</b>	<b>171,81</b>	<b>174,33</b>	<b>174,50</b>	<b>174,11</b>	<b>174,38</b>
<b>Конина / Horseflesh</b>					
Баткенская/ Batken	0,00	0,00	0,00	0,00	0,00
Джалал-Абадская / Djalal-Abad	144,33	145,00	145,00	145,00	145,00
Иссык-Кульская / Issyk-Kul	152,67	149,50	147,50	150,00	151,00
Нарынская / Naryn	168,13	180,00	0,00	180,00	180,00
Ошская / Osh	130,83	136,67	130,00	140,00	140,00
Таласская / Talas	202,71	193,58	196,25	192,50	192,00
Чуйская / Chui	220,00	220,00	220,00	220,00	220,00
г.Бишкек/ Bishkek	190,00	189,54	191,13	192,50	185,00
<b>В среднем по республике / Average in the Republic</b>	<b>180,50</b>	<b>180,04</b>	<b>180,07</b>	<b>182,39</b>	<b>177,65</b>
<b>Свинина / Pork</b>					
Баткенская/ Batken	0,00	0,00	0,00	0,00	0,00
Джалал-Абадская / Djalal-Abad	180,00	180,00	180,00	180,00	180,00
Иссык-Кульская / Issyk-Kul	182,83	176,67	170,00	180,00	180,00
Нарынская / Naryn	0,00	0,00	0,00	0,00	0,00
Ошская / Osh	184,67	199,50	220,00	192,50	186,00
Таласская / Talas	191,83	200,00	200,00	200,00	200,00
Чуйская / Chui	177,50	185,00	185,00	185,00	185,00
г.Бишкек/ Bishkek	170,00	222,50	222,50	222,50	222,50
<b>В среднем по республике / Average in the Republic</b>	<b>174,00</b>	<b>210,79</b>	<b>213,30</b>	<b>209,98</b>	<b>209,08</b>
<b>Домашняя птица / Chicken Meat</b>					
Баткенская/ Batken	115,00	110,00	110,00	110,00	110,00
Джалал-Абадская / Djalal-Abad	116,79	142,02	137,86	139,64	148,57
Иссык-Кульская / Issyk-Kul	136,22	130,17	128,33	126,17	136,00
Нарынская / Naryn	0,00	0,00	0,00	0,00	0,00
Ошская / Osh	185,97	182,67	180,00	180,00	188,00
Таласская / Talas	162,22	155,57	142,92	147,63	176,17
Чуйская / Chui	172,62	145,83	145,83	145,83	145,83
г.Бишкек/ Bishkek	151,50	150,13	148,94	151,75	149,70
<b>В среднем по республике / Average in the Republic</b>	<b>153,12</b>	<b>151,17</b>	<b>149,57</b>	<b>151,38</b>	<b>152,55</b>
<b>Яйца / Eggs</b>					
Баткенская/ Batken	62,07	70,00	70,00	70,00	70,00
Джалал-Абадская / Djalal-Abad	58,37	58,38	58,38	58,38	58,38
Иссык-Кульская / Issyk-Kul	59,50	57,93	52,10	58,90	62,80
Нарынская / Naryn	61,33	56,92	56,25	56,25	58,25
Ошская / Osh	64,72	57,92	55,00	58,75	60,00
Таласская / Talas	65,19	63,88	61,88	63,75	66,00
Чуйская / Chui	61,17	61,44	52,50	63,13	68,70
г.Бишкек/ Bishkek	59,24	58,21	57,03	58,10	59,51
<b>В среднем по республике / Average in the Republic</b>	<b>60,19</b>	<b>58,94</b>	<b>56,78</b>	<b>59,15</b>	<b>60,88</b>

**Продовольственный баланс <sup>1</sup>**  
по базовым продуктам питания

**Таблица 3.**

**Table 3.**

**Food balance <sup>1</sup>**  
of basic foodstuffs expressed in physical quantities

Базовые продукты питания / Basic foodstuffs	Хлебопродукты/ Bread and bread products		Пшеница и продукты ее переработки/		Картофель / Potatoes		Овощи и бахчевые / Vegetables and melons		Фрукты и ягоды / Fruits and berries	
	в пересчете на зерно, тыс. тонн / in grain, thousand tons		в пересчете на зерно, тыс. тонн / in grain, thousand tons		свежий, тыс. тонн / fresh, thousand tons		свежие, тыс. тонн / fresh, thousand tons		свежие, тыс. тонн / fresh, thousand tons	
Физическое количество / Physical quantities	2008	2009	2008	2009	2008	2009	2008	2009	2008	2009
1. Запасы на начало года / Opening stocks	1143,1	1236,8	432,6	514,0	755,3	688,6	268,4	274,0	22,8	19,0
2. Произведено продовольствия в стране (+) / Food production in the country	1510,9	1929,2	746,2	1056,8	1334,9	1393,1	947,0	969,7	185,4	200,5
3. Импортировано прод. товаров (+) / Food imports	557,0	543,6	474,4	447,0	0,7	1,6	11,6	7,0	79,1	55,1
<b>Поступление (1-3) (+) Availability</b>	3211,0	3709,6	1653,2	2017,8	2090,9	2083,3	1227,0	1250,7	287,3	274,6
4. Расходы на семена (-) / Seed	149,6	147,5	111,2	97,4	314,7	326,0	0,0	0,2	-	-
5. На корм скоту (-) / Fodder	759,0	845,2	177,1	177,6	167,4	188,2	13,4	77,5	16,2	4,6
6. Потери (-) / Losses	57,3	66,2	14,9	19,2	63,0	62,8	15,9	16,2	11,8	11,3
7. Экспортировано прод. товаров (-) / Food exports	40,0	80,3	3,8	3,9	350,5	350,8	155,0	110,0	88,3	105,4
8. Наличие для потребления населением (-) / Availability for consumption by the population	968,3	977,1	832,2	839,5	506,7	510,1	768,7	777,9	152,0	150,6
9. Другие виды использования (-) / Other utilisation										
<b>Использование (4-9) (-) / Consumption</b>	1974,2	2116,3	1139,2	1137,6	1402,3	1437,9	953,0	981,8	268,3	271,9
10. Запасы на конец периода / Closing stocks	1236,8	1593,3	514,0	880,2	688,6	645,4	274,0	268,9	19,0	2,7

<sup>1</sup> Предварительные данные

<sup>1</sup> Preliminary data

Таблица 3.(продолжение)

Table 3. (continued)

Базовые продукты питания / Basic foodstuffs	Мясо и мясопродукты / Meat and meat products		Молоко и молочные продукты / Milk and dairy products		Яйца / Eggs		Жиры растительные / Vegetable oil		Сахар и кондитерские изделия / Sugar and confectionery	
	в пересчете на убойный вес, тыс.тонн / in carcassed wieght, thousand tons		в пересчете на молоко, тыс. тонн / in milk, thousand tons		миллионов штук / millions		тыс. тонн / thousand tons		в пересчете на сахар, тыс. тонн	
Физическое количество / Physical quantities	2008	2009	2008	2009	2008	2009	2008	2009	2008	2009
1. Запасы на начало года / Opening stocks	4,6	4,7	25,1	25,4	15,5	15,5	17,9	26,1	94,5	62,3
2. Произведено продовольствия в стране (+) / Food production in the country	184,2	187,0	1273,5	1314,7	369,3	369,3	18,3	20,9	10,9	5,9
3. Импортировано прод. товаров (+) / Food imports	50,7	64,8	36,2	37,8	22,1	42,8	25,1	34,0	72,4	87,7
<b>Поступление (1-3) (+) Availability</b>	239,5	256,5	1334,8	1377,9	406,9	427,6	61,3	81,0	177,8	155,9
4. Расходы на семена (-) / Seed	-	-	-	-	7,2	8,1	-	-	-	-
5. На корм скоту (-) / Fodder	0,0	0,0	121,1	106,3	1,2	1,3	-	-	-	-
6. Потери (-) / Losses	0,0	0,0	1,6	1,7	0,0	0,1	0,0	0,0	0,1	0,1
7. Экспортировано прод. товаров (-) / Food exports	43,0	54,3	83,5	128,3	0,6	0,0	0,2	0,0	3,1	0,3
8. Наличие для потребления населением (-) / Availablity for consumption by the population	191,8	197,4	1103,2	1115,4	382,4	388,0	35,0	40,4	112,3	113,8
9. Другие виды использования (-) / Other utilisation										
<b>Использование (4-9) (-) / Consumption</b>	234,8	251,7	1309,4	1351,7	391,4	397,5	35,2	40,4	115,5	114,2
10. Запасы на конец периода / Closing stocks	4,7	4,8	25,4	26,2	15,5	30,1	26,1	40,6	62,3	41,7

**Таблица 4: Баланс питания в виде энергетической ценности по результатам обследований  
ежедневного потребления и оценки ежедневных потребностей**  
(все население по демографическим группам и регионам)

**Table 4: Food Balance expressed in nutritional values and compared to calculated daily needs based on surveys of daily intake  
and on calculated daily needs based on recurrent nutritional surveillance**  
(total population by age groups and by region)

	Население, человек		Ккал в день на душу населения		Белки в день на душу населения, грамм		Жиры в день на душу населения, грамм		
	Number, people		C/Calories C/d/p		Proteins g/d/p		Fats g/d/p		
	I полугодие / I half year		I полугодие / I half year		I полугодие / I half year		I полугодие / I half year		
	2008	2009	2008	2009	2008	2009	2008	2009	
<b>Все население</b>	<b>5 224 260</b>	<b>5 276 092</b>							<b>Total population</b>
Баткенская область	425 946	431 067	2 482	2 219	61,9	56,4	70,6	62,4	Batken
Джалал-Абадская область	980 458	993 761	2 053	2 408	54,1	62,4	44,7	58,8	Djalal-Abad
Иссык-Кульская область	432 556	434 882	2 177	2 229	55,7	58,5	54,3	54,3	Issyk-Kul
Нарынская область	269 828	271 480	2 151	2 271	60,2	62,1	46,9	54,4	Naryn
Ошская область	1 323 714	1 339 205	2 128	2 272	54,5	56,9	51,5	58,8	Osh
Таласская область	217 581	219 410	2 308	2 391	58,4	61,6	58,4	63,3	Talas
Чуйская область	759 948	762 492	2 606	2 460	69,0	65,5	74,0	71,4	Chui
г.Бишкек	814 229	823 795	2 462	2 442	68,1	67,2	68,6	69,8	Bishkek
Суточное потребление			2 277	2 348	59,8	61,3	58,0	62,2	Daily intake
Суточные потребности			2 431	2 431	78,5	78,5	73,1	73,1	Daily needs
Баланс: (+) или (-)			-154	-83	-19	-17	-15	-11	Balance: (+) or (-)

**Таблица 4: (продолжение)**  
**Table 4: (continued)**

	Население, человек		Ккал в день на душу населения		Белки в день на душу населения, грамм		Жиры в день на душу населения, грамм		
	Number, people		C/Calories C/d/p		Proteins g/d/p		Fats g/d/p		
	I полугодие / I half year		I полугодие / I half year		I полугодие / I half year		I полугодие / I half year		
	2008	2009	2008	2009	2008	2009	2008	2009	
<b>Население пенсионного возраста</b>	<b>534 267</b>	<b>552 414</b>							<b>Pensioners</b>
Баткенская область	33 995	36 014	2 712	2 505	66,4	63,9	77,4	73,5	Batken
Джалал-Абадская область	99 364	101 744	2 140	2 501	56,9	65,4	48,4	63,3	Djalal-Abad
Иссык-Кульская область	47 925	51 467	2 562	2 637	66,5	68,6	67,7	68,0	Issyk-Kul
Нарынская область	29 169	26 619	2 319	2 481	68,3	69,4	53,8	60,6	Naryn
Ошская область	105 848	110 707	2 277	2 663	58,6	66,7	54,9	72,5	Osh
Таласская область	17 834	17 964	2 657	2 647	67,0	70,2	69,3	72,8	Talas
Чуйская область	99 785	105 065	3 056	2 919	82,6	80,6	90,9	92,8	Chui
г.Бишкек	100 346	102 836	2 586	2 624	74,3	76,2	77,7	79,4	Bishkek
Суточное потребление			2 523	2 653	67,7	71,1	67,7	75,1	Daily intake
Суточные потребности			2 319	2 319	76,8	76,8	73,0	73,0	Daily needs
Баланс: (+) или (-)			204	334	-9	-6	-5	2	Balance: (+) or (-)

**Таблица 4: (продолжение)**  
**Table 4: (continued)**

	Население, человек		Ккал в день на душу населения		Белки в день на душу населения, грамм		Жиры в день на душу населения, грамм		
	Number, people		C/Calories C/d/p		Proteins g/d/p		Fats g/d/p		
	I полугодие / I half year		I полугодие / I half year		I полугодие / I half year		I полугодие / I half year		
	2008	2009	2008	2009	2008	2009	2008	2009	
<b>Население трудоспособного возраста</b>	<b>2 630 969</b>	<b>2 661 933</b>							<b>Active population</b>
Баткенская область	203 834	205 325	2 719	2 482	67,9	63,1	77,8	70,2	Batken
Джалал-Абадская область	485 616	485 267	2 268	2 652	59,6	68,7	49,8	65,0	Djalal-Abad
Иссык-Кульская область	228 595	225 487	2 380	2 480	61,0	65,4	59,5	60,5	Issyk-Kul
Нарынская область	125 392	129 252	2 441	2 534	67,4	68,9	53,3	61,0	Naryn
Ошская область	597 190	633 089	2 387	2 498	61,3	62,3	58,5	65,1	Osh
Таласская область	102 563	103 702	2 668	2 760	67,9	71,1	67,6	73,0	Talas
Чуйская область	424 904	413 371	2 807	2 675	74,3	71,2	80,7	77,2	Chui
г.Бишкек	462 875	466 441	2 724	2 642	75,5	72,7	76,6	75,7	Bishkek
Суточное потребление			2 531	2 588	66,6	67,7	65,4	68,9	Daily intake
Суточные потребности			2 551	2 551	74,5	74,5	70,4	70,4	Daily needs
Баланс: (+) или (-)			-20	37	-8	-7	-5	-1	Balance: (+) or (-)

**Таблица 4: (продолжение)**  
**Table 4: (continued)**

	Население, человек		Ккал в день на душу населения		Белки в день на душу населения, грамм		Жиры в день на душу населения, грамм		
	Number, people		C/Calories C/d/p		Proteins g/d/p		Fats g/d/p		
	I полугодие / I half year		I полугодие / I half year		I полугодие / I half year		I полугодие / I half year		
	2008	2009	2008	2009	2008	2009	2008	2009	
<b>Дети 1-17</b>	<b>1 969 480</b>	<b>1 964 977</b>							<b>Children 1-17</b>
Баткенская область	184 662	175 405	2 225	2 034	55,7	51,5	62,6	56,1	Batken
Джалал-Абадская область	374 747	388 029	1 865	2 193	49,2	56,9	39,6	52,6	Djalal-Abad
Иссык-Кульская область	146 627	145 947	1 874	1 881	47,5	49,1	45,4	44,5	Issyk-Kul
Нарынская область	109 236	110 895	1 892	2 010	53,1	55,1	40,2	47,6	Naryn
Ошская область	600 646	573 257	1 916	2 035	48,9	51,2	45,6	51,4	Osh
Таласская область	92 616	92 253	1 955	2 069	49,1	52,9	49,0	54,3	Talas
Чуйская область	222 766	235 739	2 167	1 963	56,8	51,1	57,8	54,2	Chui
г.Бишкек	238 180	243 452	2 033	2 091	54,8	55,9	53,0	57,7	Bishkek
Суточное потребление			1 975	2 053	51,3	53,1	48,2	52,6	Daily intake
Суточные потребности			2 276	2 276	76,0	76,0	69,0	69,0	Daily needs
Баланс: (+) или (-)			-300	-223	-25	-23	-21	-16	Balance: (+) or (-)

**Таблица 5: Баланс питания в виде энергетической ценности по результатам обследований  
ежедневного потребления и оценки ежедневных потребностей**  
(все население по квинтильным группам и регионам)

**Table 5: Food Balance expressed in nutritional values and compared to calculated daily needs, based on surveys of daily intake  
and on calculated daily needs based on recurrent nutritional surveillance**  
(total population by quintile groups and by region)

	Население, человек		Ккал в день на душу населения		Белки в день на душу населения, грамм		Жиры в день на душу населения, грамм		
	Number, people		C/Calories C/d/p		Proteins g/d/p		Fats g/d/p		
	I полугодие / I half year		I полугодие / I half year		I полугодие / I half year		I полугодие / I half year		
	2008	2009	2008	2009	2008	2009	2008	2009	
<b>Первая квинтиль</b>	<b>1 044 193</b>	<b>1 056 830</b>							<b>First quintile</b>
Баткенская область	159 564	120 354	2 306	1 964	55,9	48,6	62,7	53,5	Batken
Джалал-Абадская область	329 469	349 431	1 801	2 154	48,3	56,8	35,2	53,0	Djalal-Abad
Иссык-Кульская область	82 913	137 826	1 690	1 821	46,3	46,7	42,5	39,2	Issyk-Kul
Нарынская область	123 157	109 296	2 032	2 073	58,4	58,5	42,4	47,7	Naryn
Ошская область	207 597	123 507	1 779	1 879	46,4	46,1	39,9	45,5	Osh
Таласская область	68 457	87 597	1 869	1 902	46,6	47,0	49,0	48,8	Talas
Чуйская область	60 722	116 203	1 795	1 899	47,1	47,3	38,9	46,6	Chui
г.Бишкек	12 314	12 615	1 157	1 589	31,4	42,8	27,0	34,4	Bishkek
Суточное потребление			1 889	1 993	49,7	51,5	42,8	48,6	Daily intake
Суточные потребности			2 431	2 431	78,6	78,6	73,1	73,1	Daily needs
Баланс: (+) или (-)			-542	-438	-29	-27	-30	-25	Balance: (+) or (-)



Таблица 5: (продолжение)

Table 5: (continued)

	Население, человек		Ккал в день на душу населения		Белки в день на душу населения, грамм		Жиры в день на душу населения, грамм		
	Number, people		C/Calories C/d/p		Proteins g/d/p		Fats g/d/p		
	I полугодие / I half year		I полугодие / I half year		I полугодие / I half year		I полугодие / I half year		
	2008	2009	2008	2009	2008	2009	2008	2009	
<b>Вторая квинтиль</b>	<b>1 044 142</b>	<b>1 053 750</b>							<b>Second quintile</b>
Баткенская область	80 527	97 723	2 553	2 115	63,4	54,3	71,8	56,9	Batken
Джалал-Абадская область	300 595	237 504	1 983	2 214	52,0	56,1	44,1	53,9	Djalal-Abad
Иссык-Кульская область	132 689	136 311	1 844	2 051	45,6	52,6	43,2	49,3	Issyk-Kul
Нарынская область	53 416	54 096	1 952	2 100	54,1	54,7	40,6	48,3	Naryn
Ошская область	224 453	315 582	1 967	1 957	48,5	48,6	50,1	48,4	Osh
Таласская область	60 820	61 859	2 151	2 346	53,7	60,7	53,8	63,2	Talas
Чуйская область	152 179	111 264	2 149	2 180	54,0	58,5	54,5	56,8	Chui
г.Бишкек	39 464	39 410	1 683	1 723	46,5	47,6	41,3	41,9	Bishkek
Суточное потребление			2 027	2 087	51,6	53,4	49,2	52,0	Daily intake
Суточные потребности			2 431	2 431	78,6	78,6	73,1	73,1	Daily needs
Баланс: (+) или (-)			-404	-344	-27	-25	-24	-21	Balance: (+) or (-)

**Таблица 5: (продолжение)**  
**Table 5: (continued)**

	Население, человек		Ккал в день на душу населения		Белки в день на душу населения, грамм		Жиры в день на душу населения, грамм		
	Number, people		C/Calories C/d/p		Proteins g/d/p		Fats g/d/p		
	I полугодие / I half year		I полугодие / I half year		I полугодие / I half year		I полугодие / I half year		
	2008	2009	2008	2009	2008	2009	2008	2009	
<b>Третья квинтиль</b>	<b>1 043 389</b>	<b>1 055 021</b>							<b>Third quintile</b>
Баткенская область	82 397	107 283	2 353	2 202	61,7	54,8	68,2	60,1	Batken
Джалал-Абадская область	207 383	194 997	2 195	2 433	56,7	62,3	49,8	58,1	Djalal-Abad
Иссык-Кульская область	91 779	55 044	2 378	2 302	57,8	61,9	56,6	59,0	Issyk-Kul
Нарынская область	36 135	41 895	2 102	2 345	57,2	60,7	45,7	59,3	Naryn
Ошская область	339 222	333 843	2 041	2 206	52,0	54,2	47,4	55,8	Osh
Таласская область	49 336	36 890	2 429	2 647	62,6	71,0	58,4	66,2	Talas
Чуйская область	133 024	149 548	2 359	2 341	62,0	60,5	62,6	62,9	Chui
г.Бишкек	104 111	135 521	1 851	2 018	50,0	53,8	46,1	52,0	Bishkek
Суточное потребление			2 168	2 268	56,0	57,8	52,6	57,9	Daily intake
Суточные потребности			2 431	2 431	78,6	78,6	73,1	73,1	Daily needs
Баланс: (+) или (-)			-263	-162	-23	-21	-20	-15	Balance: (+)or (-)

Таблица 5: (продолжение)

Table 5: (continued)

	Население, человек		Ккал в день на душу населения		Белки в день на душу населения, грамм		Жиры в день на душу населения, грамм		
	Number, people		C/Calories C/d/p		Proteins g/d/p		Fats g/d/p		
	I полугодие / I half year		I полугодие / I half year		I полугодие / I half year		I полугодие / I half year		
	2008	2009	2008	2009	2008	2009	2008	2009	
<b>Четвертая квинтиль</b>	<b>1 048 471</b>	<b>1 061 968</b>							<b>Fourth quintile</b>
Баткенская область	65 294	44 200	2 463	2 774	63,1	75,1	75,6	86,3	Batken
Джалал-Абадская область	110 517	118 594	2 481	2 676	65,5	69,7	56,9	64,7	Djalal-Abad
Иссык-Кульская область	65 339	60 319	2 512	2 622	66,2	68,5	65,2	66,3	Issyk-Kul
Нарынская область	29 303	35 367	2 325	2 411	62,4	67,6	51,3	63,9	Naryn
Ошская область	312 523	296 939	2 218	2 337	57,0	58,5	51,0	59,8	Osh
Таласская область	20 731	22 849	2 899	3 149	77,0	82,0	72,9	85,5	Talas
Чуйская область	201 181	213 797	2 722	2 416	73,1	64,2	77,0	70,7	Chui
г.Бишкек	243 583	269 904	2 200	2 179	60,1	59,1	59,2	60,3	Bishkek
Суточное потребление			2 388	2 405	63,2	63,1	61,4	64,8	Daily intake
Суточные потребности			2 431	2 431	78,6	78,6	73,1	73,1	Daily needs
Баланс: (+) или (-)			-43	-26	-15	-15	-12	-8	Balance: (+) or (-)

Таблица 5: (продолжение)  
Table 5: (continued)

	Население, человек		Ккал в день на душу населения		Белки в день на душу населения, грамм		Жиры в день на душу населения, грамм		
	Number, people		C/Calories C/d/p		Proteins g/d/p		Fats g/d/p		
	I полугодие / I half year		I полугодие / I half year		I полугодие / I half year		I полугодие / I half year		
	2008	2009	2008	2009	2008	2009	2008	2009	
<b>Пятая квинтиль</b>	<b>1 044 065</b>	<b>1 048 524</b>							<b>Fifth quintile</b>
Баткенская область	38 164	61 506	3 382	2 514	82,8	64,2	97,6	75,6	Batken
Джалал-Абадская область	32 493	93 234	2 896	3 458	76,3	90,7	72,6	86,7	Djalal-Abad
Иссык-Кульская область	59 836	45 382	2 916	3 394	76,2	95,2	80,2	94,0	Issyk-Kul
Нарынская область	27 817	30 825	2 938	3 012	82,1	83,4	75,4	71,4	Naryn
Ошская область	239 920	269 334	2 589	2 830	67,5	73,1	69,0	79,4	Osh
Таласская область	18 237	10 216	3 474	4 244	86,2	112,8	92,2	127,5	Talas
Чуйская область	212 842	171 680	3 210	3 179	86,7	88,5	102,2	106,0	Chui
г.Бишкек	414 757	366 346	2 882	2 899	80,5	81,1	83,6	87,7	Bishkek
Суточное потребление			2 914	2 992	78,6	81,1	84,0	87,9	Daily intake
Суточные потребности			2 431	2 431	78,6	78,6	73,1	73,1	Daily needs
Баланс: (+) или (-)			483	561	0	3	11	15	Balance: (+) or (-)

**Таблица 6: Продовольственный баланс домохозяйств в стоимостном выражении по результатам обследований уровня жизни**

*(все население по доходным квинтильным группам и регионам, сомов)*

**Table 6: Household Food Balance expressed in economic terms, based on surveys of poverty levels**

*(total population by income quintile and by region, som)*

	Население, человек		Среднедушевые доходы, сом/чел/месяц		Среднедушевые расходы на питание, сом/чел/месяц		Баланс, %		
	Number, people		Average per capita available income, s/ps/month		Average per capita food expenditure, s/ps/month		Balance, %		
	I полугодие / I half year		I полугодие / I half year		I полугодие / I half year		I полугодие / I half year		
	2008	2009	2008	2009	2008	2009	2008	2009	
<b>Все население</b>	<b>5 224 260</b>	<b>5 276 092</b>							<b>Total population</b>
Баткенская область	425 946	431 067	1 705	2 037	607	749	35,6	36,8	Batken
Джалал-Абадская область	980 458	993 761	1 589	1 846	728	919	45,9	49,8	Djalal-Abad
Иссык-Кульская область	432 556	434 882	1 445	1 786	928	902	64,2	50,5	Issyk-Kul
Нарынская область	269 828	271 480	1 126	1 578	672	667	59,6	42,3	Naryn
Ошская область	1 323 714	1 339 205	1 513	2 186	980	1 158	64,8	53,0	Osh
Таласская область	217 581	219 410	1 034	1 490	775	770	75,0	51,7	Talas
Чуйская область	759 948	762 492	2 007	2 383	1 115	1 123	55,5	47,1	Chui
г.Бишкек	814 229	823 795	2 119	2 649	1 561	1 570	73,7	59,3	Bishkek
Средневзвешенный баланс			1 664	2 117	984	1 076	59,1	50,8	Average weighted balance

**Таблица 6: (продолжение)**  
**Table 6: (continued)**

	Население, человек		Среднедушевые доходы, сом/чел/месяц		Среднедушевые расходы на питание, сом/чел/месяц		Баланс, %		
	Number, people		Average per capita available income, s/ps/month		Average per capita food expenditure, s/ps/month		Balance, %		
	I полугодие / I half year		I полугодие / I half year		I полугодие / I half year		I полугодие / I half year		
	2008	2009	2008	2009	2008	2009	2008	2009	
<b>Первая квинтиль</b>	<b>1 044 044</b>	<b>1 053 462</b>							<b>First quintile</b>
Баткенская область	71 898	85 372	615	841	451	553	73,3	65,7	Batken
Джалал-Абадская область	120 775	185 679	643	848	498	662	77,5	78,1	Djalal-Abad
Иссык-Кульская область	139 640	147 197	448	644	735	672	164,0	104,5	Issyk-Kul
Нарынская область	128 352	116 851	483	676	458	474	94,9	70,0	Naryn
Ошская область	304 877	269 920	627	828	804	753	128,2	90,9	Osh
Таласская область	107 037	90 013	459	658	641	548	139,6	83,4	Talas
Чуйская область	102 937	111 123	582	734	734	665	126,1	90,6	Chui
г.Бишкек	68 526	47 306	592	834	939	995	158,7	119,3	Bishkek
Средневзвешенный баланс			563	766	678	663	120,5	86,5	Average weighted balance

Таблица 6: (продолжение)

Table 6: (continued)

	Население, человек		Среднедушевые доходы, сом/чел/месяц		Среднедушевые расходы на питание, сом/чел/месяц		Баланс, %		
	Number, people		Average per capita available income, s/ps/month		Average per capita food expenditure, s/ps/month		Balance, %		
	I полугодие / I half year		I полугодие / I half year		I полугодие / I half year		I полугодие / I half year		
	2008	2009	2008	2009	2008	2009	2008	2009	
<b>Вторая квинтиль</b>	<b>1 045 774</b>	<b>1 057 207</b>							<b>Second quintile</b>
Баткенская область	73 956	92 124	921	1 280	459	668	49,9	52,2	Batken
Джалал-Абадская область	206 409	332 654	959	1 244	694	765	72,3	61,5	Djalal-Abad
Иссык-Кульская область	69 758	91 127	940	1 282	895	697	95,2	54,4	Issyk-Kul
Нарынская область	61 344	40 637	925	1 238	691	599	74,6	48,4	Naryn
Ошская область	312 957	256 233	940	1 290	880	975	93,6	75,6	Osh
Таласская область	44 599	42 430	968	1 265	768	855	79,3	67,6	Talas
Чуйская область	147 785	112 410	1 025	1 277	948	911	92,6	71,3	Chui
г.Бишкек	128 968	89 593	958	1 271	1 289	1 147	134,5	90,3	Bishkek
Средневзвешенный баланс			957	1 268	859	847	89,7	66,8	Average weighted balance

**Таблица 6: (продолжение)**  
**Table 6: (continued)**

	Население, человек		Среднедушевые доходы, сом/чел/месяц		Среднедушевые расходы на питание, сом/чел/месяц		Баланс, %		
	Number, people		Average per capita available income, s/ps/month		Average per capita food expenditure, s/ps/month		Balance, %		
	I полугодие / I half year		I полугодие / I half year		I полугодие / I half year		I полугодие / I half year		
	2008	2009	2008	2009	2008	2009	2008	2009	
<b>Третья квинтиль</b>	<b>1 044 759</b>	<b>1 057 143</b>							<b>Third quintile</b>
Баткенская область	91 259	85 237	1 341	1 708	564	643	42,1	37,6	Batken
Джалал-Абадская область	279 526	169 040	1 293	1 686	629	811	48,6	48,1	Djalal-Abad
Иссык-Кульская область	74 277	76 001	1 297	1 741	775	879	59,7	50,5	Issyk-Kul
Нарынская область	20 768	49 433	1 281	1 687	576	790	45,0	46,8	Naryn
Ошская область	293 031	298 008	1 321	1 775	1 003	1 054	75,9	59,4	Osh
Таласская область	25 848	44 269	1 330	1 762	768	818	57,8	46,4	Talas
Чуйская область	144 812	157 420	1 317	1 684	1 125	1 001	85,4	59,4	Chui
г.Бишкек	115 237	177 735	1 322	1 734	1 319	1 432	99,8	82,5	Bishkek
Средневзвешенный баланс			1 313	1 728	886	1 003	67,5	58,0	Average weighted balance



**Таблица 6: (продолжение)**  
**Table 6: (continued)**

	Население, человек		Среднедушевые доходы, сом/чел/месяц		Среднедушевые расходы на питание, сом/чел/месяц		Баланс, %		
	Number, people		Average per capita available income, s/ps/month		Average per capita food expenditure, s/ps/month		Balance, %		
	I полугодие / I half year		I полугодие / I half year		I полугодие / I half year		I полугодие / I half year		
	2008	2009	2008	2009	2008	2009	2008	2009	
<b>Четвертая квинтиль</b>	<b>1 044 564</b>	<b>1 051 334</b>							<b>Fourth quintile</b>
Баткенская область	95 569	96 421	1 764	2 366	592	821	33,5	34,7	Batken
Джалал-Абадская область	214 584	173 777	1 831	2 392	834	1 181	45,5	49,4	Djalal-Abad
Иссык-Кульская область	78 388	54 815	1 752	2 454	1 107	1 054	63,2	42,9	Issyk-Kul
Нарынская область	21 857	30 191	1 816	2 332	779	758	42,9	32,5	Naryn
Ошская область	208 753	217 895	1 862	2 361	1 127	1 387	60,5	58,8	Osh
Таласская область	24 272	30 308	1 761	2 383	1 027	974	58,3	40,9	Talas
Чуйская область	154 780	187 282	1 851	2 407	1 161	1 219	62,7	50,6	Chui
г.Бишкек	246 361	260 646	1 812	2 427	1 428	1 480	78,8	61,0	Bishkek
Средневзвешенный баланс			1 822	2 396	1 083	1 247	59,4	52,0	Average weighted balance

**Таблица 6: (продолжение)**  
**Table 6: (continued)**

	Население, человек		Среднедушевые доходы, сом/чел/месяц		Среднедушевые расходы на питание, сом/чел/месяц		Баланс, %		
	Number, people		Average per capita available income, s/ps/month		Average per capita food expenditure, s/ps/month		Balance, %		
	I полугодие / I half year		I полугодие / I half year		I полугодие / I half year		I полугодие / I half year		
	2008	2009	2008	2009	2008	2009	2008	2009	
<b>Пятая квинтиль</b>	<b>1 045 118</b>	<b>1 056 946</b>							<b>Fifth quintil</b>
Баткенская область	93 264	71 913	3 464	4 377	901	1 116	26,0	25,5	Batken
Джалал-Абадская область	159 163	132 611	3 315	4 241	981	1 462	29,6	34,5	Djalal-Abad
Иссык-Кульская область	70 494	65 742	3 736	4 542	1 304	1 599	34,9	35,2	Issyk-Kul
Нарынская область	37 507	34 367	3 169	4 231	1 360	1 151	42,9	27,2	Naryn
Ошская область	204 096	297 148	3 635	4 477	1 214	1 619	33,4	36,2	Osh
Таласская область	15 825	12 390	3 505	5 145	1 320	1 422	37,7	27,6	Talas
Чуйская область	209 633	194 258	3 991	4 507	1 378	1 515	34,5	33,6	Chui
г.Бишкек	255 136	248 516	3 772	4 378	2 104	2 027	55,8	46,3	Bishkek
Средневзвешенный баланс			3 664	4 427	1 414	1 623	38,6	36,7	Average weighted balance

**Таблица 7: Продовольственный баланс домохозяйств в стоимостном выражении по результатам обследований уровня жизни**  
(все население по расходным квинтильным группам и регионам, сом)

**Table 7: Household Food Balance expressed in economic terms, based on surveys of poverty levels**  
(total population by expenditure quintile and by region, som)

	Население, человек		Общие среднедушевые расходы, сом/чел/месяц		Среднедушевые расходы на питание, сом/чел/месяц		Баланс, %		
	Number, people		Total per capita expenditures s/ps/month		Average per capita food expenditure, s/ps/month		Balance, %		
	I полугодие / I half year		I полугодие / I half year		I полугодие / I half year		I полугодие / I half year		
	2008	2009	2008	2009	2008	2009	2008	2009	
<b>Все население</b>	<b>5 224 260</b>	<b>5 276 092</b>							<b>Total population</b>
Баткенская область	425 946	431 067	1 488	1 818	607	749	40,8	41,2	Batken
Джалал-Абадская область	980 458	993 761	1 246	1 602	728	919	58,5	57,4	Djalal-Abad
Иссык-Кульская область	432 556	434 882	1 685	1 652	928	902	55,1	54,6	Issyk-Kul
Нарынская область	269 828	271 480	1 418	1 603	672	667	47,3	41,6	Naryn
Ошская область	1 323 714	1 339 205	1 854	2 322	980	1 158	52,9	49,9	Osh
Таласская область	217 581	219 410	1 391	1 418	775	770	55,7	54,3	Talas
Чуйская область	759 948	762 492	2 368	2 364	1 115	1 123	47,1	47,5	Chui
г.Бишкек	814 229	823 795	2 888	3 320	1 561	1 570	54,1	47,3	Bishkek
Средневзвешенный баланс			1 890	2 177	984	1 076	52,0	49,4	Average weighted balance

Таблица 7: (продолжение)

Table 7: (continued)

	Население, человек		Общие среднедушевые расходы, сом/чел/месяц		Среднедушевые расходы на питание, сом/чел/месяц		Баланс, %		
	Number, people		Total per capita expenditures s/ps/month		Average per capita food expenditure, s/ps/month		Balance, %		
	I полугодие / I half year		I полугодие / I half year		I полугодие / I half year		I полугодие / I half year		
	2008	2009	2008	2009	2008	2009	2008	2009	
<b>Первая квинтиль</b>	<b>1 045 803</b>	<b>1 056 830</b>							<b>First quintile</b>
Баткенская область	153 567	120 354	709	915	328	414	46,3	45,3	Batken
Джалал-Абадская область	344 066	349 431	683	833	435	497	63,7	59,7	Djalal-Abad
Иссык-Кульская область	77 218	137 826	683	773	395	472	57,8	61,0	Issyk-Kul
Нарынская область	130 055	109 296	661	695	351	321	53,0	46,2	Naryn
Ошская область	186 305	123 507	765	933	429	612	56,0	65,6	Osh
Таласская область	71 076	87 597	661	795	355	428	53,8	53,9	Talas
Чуйская область	64 615	116 203	695	862	424	501	60,9	58,1	Chui
г.Бишкек	18 901	12 615	802	956	432	486	53,9	50,8	Bishkek
Средневзвешенный баланс			700	833	399	474	57,0	56,9	Average weighted balance

Таблица 7: (продолжение)

Table 7: (continued)

	Население, человек		Общие среднедушевые расходы, сом/чел/месяц		Среднедушевые расходы на питание, сом/чел/месяц		Баланс, %		
	Number, people		Total per capita expenditures s/ps/month		Average per capita food expenditure, s/ps/month		Balance, %		
	I полугодие / I half year		I полугодие / I half year		I полугодие / I half year		I полугодие / I half year		
	2008	2009	2008	2009	2008	2009	2008	2009	
<b>Вторая квинтиль</b>	<b>1 045 609</b>	<b>1 053 750</b>							<b>Second quintile</b>
Баткенская область	72 289	97 723	1 113	1 306	478	675	43,0	51,7	Batken
Джалал-Абадская область	276 708	237 504	1 100	1 290	718	766	65,3	59,4	Djalal-Abad
Иссык-Кульская область	140 020	136 311	1 085	1 307	679	739	62,6	56,6	Issyk-Kul
Нарынская область	42 491	54 096	1 113	1 298	464	562	41,7	43,3	Naryn
Ошская область	297 182	315 582	1 177	1 314	722	805	61,4	61,2	Osh
Таласская область	49 805	61 859	1 117	1 295	626	731	56,0	56,5	Talas
Чуйская область	123 330	111 264	1 119	1 336	644	780	57,5	58,4	Chui
г.Бишкек	43 784	39 410	1 140	1 316	723	745	63,4	56,6	Bishkek
Средневзвешенный баланс			1 126	1 307	674	754	59,9	57,7	Average weighted balance

Таблица 7: (продолжение)

Table 7: (continued)

	Население, человек		Общие среднедушевые расходы, сом/чел/месяц		Среднедушевые расходы на питание, сом/чел/месяц		Баланс, %		
	Number, people		Total per capita expenditures s/ps/month		Average per capita food expenditure, s/ps/month		Balance, %		
	I полугодие / I half year		I полугодие / I half year		I полугодие / I half year		I полугодие / I half year		
	2008	2009	2008	2009	2008	2009	2008	2009	
<b>Третья квинтиль</b>	<b>1 043 513</b>	<b>1 055 021</b>							<b>Third quintile</b>
Баткенская область	80 769	107 283	1 526	1 764	596	781	39,1	44,3	Batken
Джалал-Абадская область	213 299	194 997	1 487	1 752	884	986	59,4	56,3	Djalal-Abad
Иссык-Кульская область	69 019	55 044	1 490	1 795	765	1 061	51,4	59,1	Issyk-Kul
Нарынская область	45 779	41 895	1 545	1 759	880	728	56,9	41,4	Naryn
Ошская область	326 783	333 843	1 503	1 789	824	1 021	54,8	57,1	Osh
Таласская область	54 384	36 890	1 478	1 807	941	1 017	63,7	56,3	Talas
Чуйская область	133 061	149 548	1 488	1 798	830	891	55,8	49,5	Chui
г.Бишкек	120 418	135 521	1 548	1 792	953	1 002	61,5	55,9	Bishkek
Средневзвешенный баланс			1 505	1 781	839	959	55,7	53,9	Average weighted balance

Таблица 7: (продолжение)  
Table 7: (continued)

	Население, человек		Общие среднедушевые расходы, сом/чел/месяц		Среднедушевые расходы на питание, сом/чел/месяц		Баланс, %		
	Number, people		Total per capita expenditures s/ps/month		Average per capita food expenditure, s/ps/month		Balance, %		
	I полугодие / I half year		I полугодие / I half year		I полугодие / I half year		I полугодие / I half year		
	2008	2009	2008	2009	2008	2009	2008	2009	
<b>Четвертая квинтиль</b>	<b>1 046 732</b>	<b>1 061 968</b>							<b>Fourth quintile</b>
Баткенская область	80 735	44 200	2 137	2 493	859	976	40,2	39,2	Batken
Джалал-Абадская область	108 242	118 594	2 120	2 401	1 114	1 389	52,6	57,9	Djalal-Abad
Иссык-Кульская область	87 480	60 319	2 104	2 437	1 294	1 220	61,5	50,0	Issyk-Kul
Нарынская область	20 786	35 367	2 133	2 431	1 009	1 069	47,3	44,0	Naryn
Ошская область	256 824	296 939	2 148	2 391	1 265	1 182	58,9	49,4	Osh
Таласская область	23 861	22 849	2 076	2 411	1 118	1 325	53,8	55,0	Talas
Чуйская область	200 400	213 797	2 146	2 435	1 245	1 253	58,0	51,4	Chui
г.Бишкек	268 404	269 904	2 208	2 459	1 299	1 256	58,8	51,1	Bishkek
Средневзвешенный баланс			2 154	2 427	1 217	1 231	56,5	50,7	Average weighted balance

**Таблица 7: (продолжение)**  
**Table 7: (continued)**

	Население, человек		Общие среднедушевые расходы, сом/чел/месяц		Среднедушевые расходы на питание, сом/чел/месяц		Баланс, %		
	Number, people		Total per capita expenditures s/ps/month		Average per capita food expenditure, s/ps/month		Balance, %		
	I полугодие / I half year		I полугодие / I half year		I полугодие / I half year		I полугодие / I half year		
	2008	2009	2008	2009	2008	2009	2008	2009	
<b>Пятая квинтиль</b>	<b>1 042 602</b>	<b>1 048 524</b>							<b>Fifth quintile</b>
Баткенская область	38 586	61 506	3 858	4 004	1 453	1 301	37,7	32,5	Batken
Джалал-Абадская область	38 143	93 234	3 558	3 955	1 483	2 159	41,7	54,6	Djalal-Abad
Иссык-Кульская область	58 818	45 382	4 032	4 139	1 865	2 081	46,3	50,3	Issyk-Kul
Нарынская область	30 717	30 825	4 375	4 194	1 778	1 535	40,6	36,6	Naryn
Ошская область	256 620	269 334	3 581	4 723	1 593	1 966	44,5	41,6	Osh
Таласская область	18 455	10 216	3 801	3 884	1 859	1 803	48,9	46,4	Talas
Чуйская область	238 542	171 680	4 145	4 452	1 596	1 807	38,5	40,6	Chui
г.Бишкек	362 721	366 346	4 155	4 816	2 118	2 139	51,0	44,4	Bishkek
Средневзвешенный баланс			3 972	4 552	1 792	1 969	45,1	43,3	Average weighted balance



**Индикаторы продовольственной безопасности Кыргызской Республики/ Indicators of Food Security of the Kyrgyz Republic**

**Таблица 8. Уровень суточной энергетической ценности рациона человека**

(ккал)

**Table 8. Level of daily energy value**

(kcal)

Период/Period	Фактическая ценность рациона <sup>1</sup> / Actual value <sup>1</sup>	Минимальная норма/ Minimal norm	Фактическое значение индикатора (гр. 2/гр.3)/Actual meaning of indicator (r.2/r.3)
1	2	3	4
янв.-март/ Jan-March 2007	2196	2431	0,90
янв.-июнь/ Jan-June 2007	2184	2431	0,90
янв.-сент./ Jan-Sep 2007	2253	2431	0,93
2007	2218	2431	0,91
янв.-март/ Jan-March 2008	2287	2431	0,94
янв.-июнь/ Jan-June 2008	2277	2431	0,94
янв.-сент./Jan-Sep 2008	2299	2431	0,95
2008	2295	2431	0,94
янв.-март/Jan-March 2009	2395	2431	0,99
янв.-июнь/ Jan-June 2009	2348	2431	0,97
янв.-сент./ Jan-Sep 2009			

<sup>1</sup> По результатам интегрированного выборочного обследования бюджета домашних хозяйств и рабочей силы/ According to the results of Integrated Sample Survey of Budgets of Household and Labour Force

**Таблица 9. Достаточность потребления отдельного продукта (на душу населения, кг в месяц)**

*(в среднем на душу населения, сомов в месяц)*

**Table 9. Sufficiency of consumption of separate product (per capita, kg/month)**

*(in average per capita, soms/month)*

Name	Actual consumption											
	янв.- март/ Jan- March 2007	янв.- июнь/ Jan- June 2007	январь- сент/ Jan-Sep 2007	2007	янв.- март/ Jan- March 2008	янв.- июнь/ Jan- June 2008	январь- сент/ Jan-Sep 2008	2008 2	янв.- март/ Jan- March 2009 1	янв.- июнь/ Jan- June 2009 1	январь- сент/ Jan- Sep 2009 1	2009 1
Bread and bakery (expressed in grain)	15,2	15,4	16,2	15,3	15,3	15,4	16,2	15,9	15,4	15,4	16,0	15,9
Meat and meat products (expressed in meat)	3,0	3,0	3,2	2,9	3,0	3,0	3,3	3,1	3,1	3,0	3,3	3,2
Milk and dairy products (expressed in milk)	10,8	15,5	17,4	17,4	10,9	15,7	17,4	18,1	11,7	15,8	17,4	18,1
Eggs (mln. pieces)	5,0	5,1	5,1	5,9	5,2	5,2	5,2	6,3	5,7	5,3	5,1	6,3
Vegetables and melons	12,0	6,2	10,9	12,2	12,2	6,2	11,0	12,6	12,2	6,3	11,5	12,6
Fruits and berries	2,1	1,4	2,6	3,0	2,1	1,2	2,0	2,5	0,9	0,4	2,1	2,4
Potato	8,2	8,0	8,4	8,0	8,2	8,0	8,4	8,3	8,0	8,1	8,2	8,3
Sugar	1,3	1,5	1,6	1,8	1,4	1,6	1,6	1,8	1,6	1,6	1,5	1,8
Vegetable oil	0,5	0,4	0,5	0,5	0,5	0,5	0,6	0,6	0,9	0,6	0,6	0,7

<sup>1</sup> Данные предварительные/ Preliminary data

<sup>2</sup> Данные уточнены/Data are specified

**Таблица 10. Экономическая доступность продуктов питания**

*(в среднем на душу населения, сомов в месяц)*

**Table 10. Economic access of food**

*(in average per capita, soms/month)*

Период/Period	Размер среднемесячных затрат домохозяйств на питание/Average monthly household costs for food	Размер среднемесячных совокупных затрат домохозяйств/Average monthly compiled costs of household	Фактическое значение индикатора (гр. 2/гр.3)/Actual meaning of indicator (row 2/row 3)
1	2	3	4
янв.-март/ Jan- March 2007	567	1178	48
янв.-июнь/ Jan-June 2007	597	1280	47
янв.-сент/ Jan- Sep 2007	675	1466	46
2007	720	1579	46
янв.-март/ Jan- March 2008	887	1600	55
янв.-июнь/ Jan-June 2008	984	1890	52
янв.-сент/ Jan- Sep 2008	1052	2090	50
2008	1093	2257	48
янв.-март/ Jan- March 2009	1089	2143	51
янв.-июнь/ Jan-June 2009	1076	2177	49
2009			

**Таблица 11. Дифференциация расходов на питание по социальным группам***(в среднем на душу населения, сомов в месяц)***Table 11. Differentiation of costs for food by social groups***(in average per capita, soms/month)*

<b>Период/Period</b>	<b>Первая квнтильная группа (с наименьшими доходами)/First Quintile (with lowest incomes)</b>	<b>Пятая квнтильная группа (с наибольшими доходами)/Fifth quintile group (with highest incomes)</b>
янв.-март/ Jan-March 2007	214,54	1128,72
янв.-июнь/ Jan-June 2007	242,68	1142,98
янв.-сент./ Jan-Sep 2007	283,81	1275,31
2007	305,22	1317,19
янв.-март/ Jan-March 2008	308,55	1665,20
янв.-июнь/ Jan-June 2008	398,71	1792,49
янв.-сент./Jan-Sep 2008	471,67	1836,05
2008	718,25	1565,47
янв.-март/Jan-March 2009	708,30	1628,62
янв.-июнь/ Jan-June 2009	662,53	1622,92

**Таблица 12. Емкость внутреннего рынка отдельных продуктов <sup>1</sup>**

(тыс. тонн)

**Table 12. Absorption of domestic market of separate products**

(thsd. tons)

	январь- март/ Jan- March 2007	январь- июнь/ Jan- June 2007	январь- сентябрь/ Jan- Sep 2007	2007	январь- март/ Jan- March 2008	январь- июнь/ Jan- June 2008	январь- сентябрь/ Jan- Sep 2008	2008	январь- март/ Jan- March 2009 <sup>1</sup>	январь- июнь/ Jan- June 2009 <sup>1</sup>	январь- сентябрь/ Jan- Sep 2009 <sup>1</sup>	2009 <sup>1</sup>
Bread and bakery (expressed in grain)	237,3	483,1	761,2	963,2	241,6	487,1	770,1	968,3	245,9	491,0	765,4	977,1
Meat and meat products (expressed in meat)	46,3	92,6	150,1	182,3	48,1	93,6	155,0	191,8	49,3	95,1	156,1	197,4
Milk and dairy products	168,8	487,1	818,9	1094,1	171,9	494,9	825,9	1103,2	186,7	505,7	832,7	1115,4
Eggs (mln. pieces)	78,5	158,7	242,3	371,7	81,7	163,9	248,3	382,4	90,2	168,9	244,3	388,0
Vegetables and melons	188,4	194,8	512,1	766,8	193,1	196,1	524,0	768,7	194,3	201,4	552,2	777,9
Fruits and berries	32,3	43,4	124,3	188,5	32,9	37,5	96,7	152,0	14,1	14,1	99,6	150,6
Potato	128,2	250,1	394,3	502,5	129,5	252,0	396,8	506,7	127,2	258,5	391,8	510,1
Sugar	20,0	48,4	75,4	111,1	22,8	50,8	76,4	112,3	25,3	51,3	72,7	112,2
Vegetable oil	7,5	13,1	24,9	31,4	7,7	16,1	28,5	35,0	14,3	20,7	28,8	40,4

<sup>1</sup> Предварительные данные/Preliminary data

**Таблица 13. Баланс необходимого и фактического уровней производства продовольствия в КР**

(тыс.тонн)

**Table 13. Balance of necessary and actual level of food production in the Kyrgyz Republic**

(mthsd. tons)

	Production of main food types											
	январь-март/ Jan-March 2007	январь-июнь/ Jan-June 2007	январь-сентябрь/ Jan-Sep 2007	2007	январь-март/ Jan-March 2008	январь-июнь/ Jan-June 2008	январь-сентябрь/ Jan-Sep 2008	2008	январь-март/ Jan-March 2009 <sup>1</sup>	январь-июнь/ Jan-June 2009 <sup>1</sup>	январь-сентябрь/ Jan-Sep 2009 <sup>1</sup>	2009 <sup>1</sup>
Wheat in weight after processing	-	24,5	678,6	708,9	-	37,9	720,0	746,2	-	29,0	943,3	1056,8
Meat in slaughter weight	42,2	84,9	132,3	183,1	42,8	85,6	133,3	184,2	43,3	86,8	135,1	187,0
Raw milk	204,5	570,8	973,6	1240,0	210,0	586,2	998,7	1273,5	216,7	607,1	1032,6	1314,7
Eggs (mln.pieces)	70,1	190,5	293,7	373,7	72,7	193,1	292,4	369,3	67,9	186,1	291,1	369,3
Vegetables and melons	-	32,7	711,6	908,9	-	39,4	742,5	947,0	-	41,9	791,4	969,7
Fruits and berries	-	1,8	122,5	180,5	-	6,8	140,8	185,4	-	4,8	155,8	200,5
Potato	-	21,9	974,3	1373,8	-	22,1	976,7	1334,9	-	25,4	899,3	1393,1
Sugar	-	9,5	16,0	36,8	6,6	10,7	10,8	10,9	0,0	0,1	0,2	5,9
Vegetable oil	4,5	7,4	11,2	17,6	4,2	7,6	11,0	18,3	4,9	7,8	12,1	20,9

<sup>1</sup> Предварительные данные/ Preliminary data

**Таблица 14. Показатели обеспеченности населения Кыргызской Республики основными продуктами питания 1**  
(в процентах)

**Table 14. Main food supply indicators for population of the Kyrgyz Republic**  
(in %)

	Коэфф.обеспеч. (по миним.норме)/ Supply rate (by min. norm)	Коэфф.обеспеч. (по миним.норме)/ Supply rate (by physiologic norm)	Коэфф.обеспеч. (по физиол.норме) за счет собственного производства/Su pply rate (by physiologic norm) for the account of own consumption	Удельный вес импорта в объеме внутрен. Рынка/ Share of import in volume of domestic market
Bakery expressed in grain	259,6	196,0	132,0	32,8
New potato (fresh)	308,8	291,6	291,3	0,2
Fresh vegetables and melons	107,9	137,1	148,5	0,5
Fresh berries	24,6	41,8	57,1	20,8
Meat expressed in slaughter weight	122,8	73,2	57,2	22,1
Raw milk	119,8	74,5	74,5	0,0
Sugar	69,7	50,9	3,7	92,7
Eggs	44,7	37,7	34,3	8,9
Vegetable oil	100,8	82,0	33,0	59,7

<sup>1</sup> Источник: Министерство сельского хозяйства/Source: Ministry of Agriculture

Order No100 Copies:120  
Information and Publishing Department  
of the MCC of the Natstatcom  
of the Kyrgyz Republic